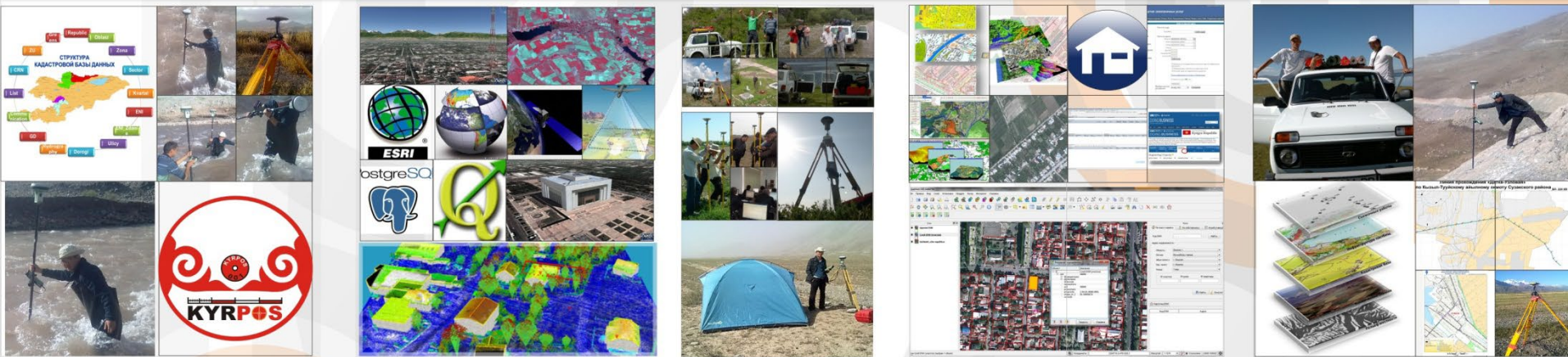


National impetus and considerations for improving and strengthening arrangements in geospatial information management and capacities



# Almaz Abdiev

State agency on land resources under the Government of the Kyrgyz Republic

# Operationalization of the IGIF

---

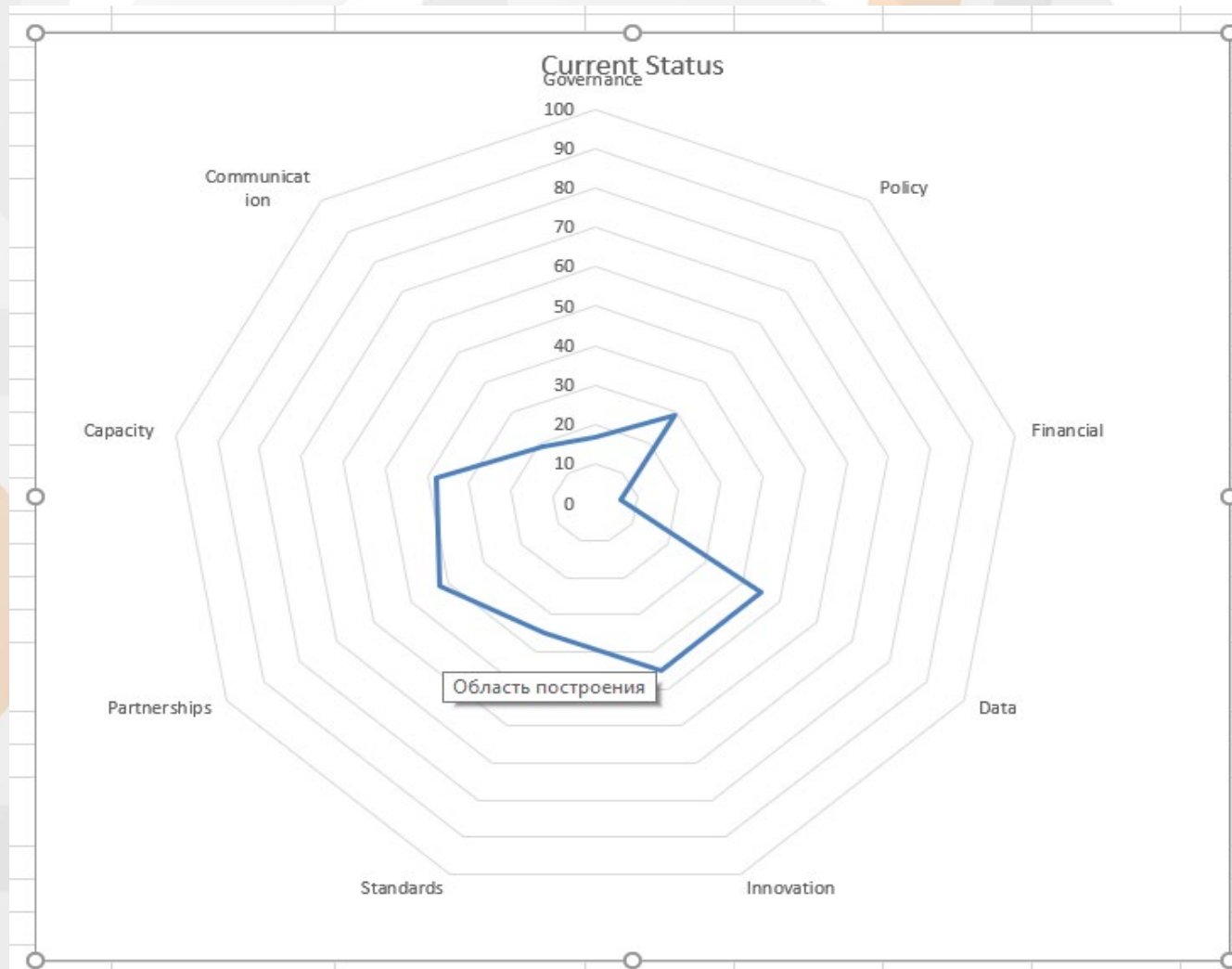
- The first step was the Diagnostic tool and Country report- it provides the current status of where the country is with geospatial information management. It follows the IGIF structure, with a series of questions and scoring for each of the 9 IGIF strategic pathways. First IGIF Kyrgyzstan assessment was completed in August 2019
- Country Report – completed in October 2019 (template by WB).

# Scores for the individual Strategic Pathways

---

Governance and Institutions	17
Policy and Legal	29
Financial	6
Data	45
Innovation	45
Standards	35
Partnerships	42
Capacity and Education	38
Communication and Engagement	19

# Results



## **Strategic Pathway 1: Governance and Institutions**

---

Government of the Kyrgyz Republic created the State Agency for Land Resources under the Government of the Kyrgyz Republic (the Resolution No. 382 July 30, 2019) on the basis of :

- Department of Cadastre and Registration of Rights to Real Estate;
- State Enterprise for Land Management;
- State Cartographic and Geodetic Service.

An inter-ministerial working group was established in 2019

## Strategic Pathway 2: Policy and Legal

Kyrgyz National Spatial  
Data Infrastructure Status



**A Draft Program has been developed to create and develop the National spatial data infrastructure of the Kyrgyz Republic and under the approval by the Governmental agencies**

- "ROAD MAP" on the implementation of the Digital Transformation Concept "Digital Kyrgyzstan 2019-2023" approved by the Government of February 15, 2019 No. 20-r:
- **Paragraph 16- The National Spatial Data Infrastructure:**
- **16.1. Create a geo-information portal for the Kyrgyz Republic (September 20, 2021);**
- **16.2. Phased to create a mapping framework and a geodesic support system (December 20, 2022);**
- **16.3. Apply geospatial data for statistical purposes (20 December 2021):**
  - statistical register;
  - Population and Housing Census;
  - Statistical maps
  - Disseminate statistical information



## Strategic Pathway 4: Data

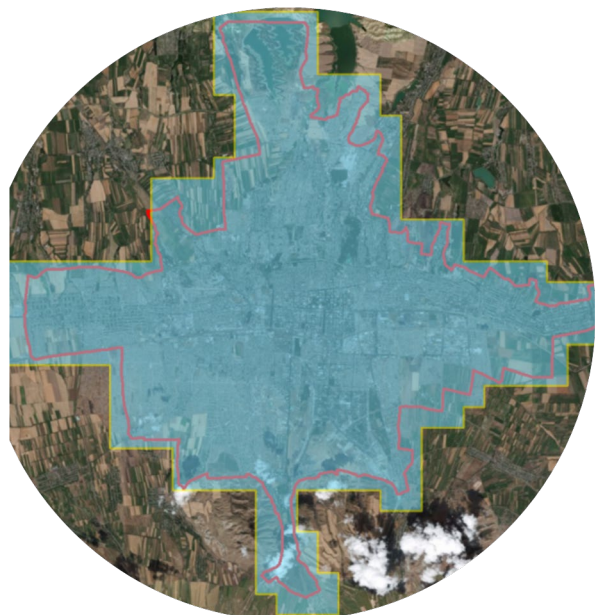


### Spatial Data Infrastructure Status

- From 01.2018: The Kyrgyz-Norwegian project is being carried out, within the framework of which aerial photography of 23,000 km<sup>2</sup> was carried out, including the city of Bishkek and adjacent areas, settlements around Lake Issyk-Kul and the Fergana Valley.
- Preparation of maps for Bishkek, 160 km<sup>2</sup>.
- Geoportal for providing government and other authorities with access to photo maps.



# Aerial photos for spatial data infrastructure





## Strategic Pathway 5: Innovation

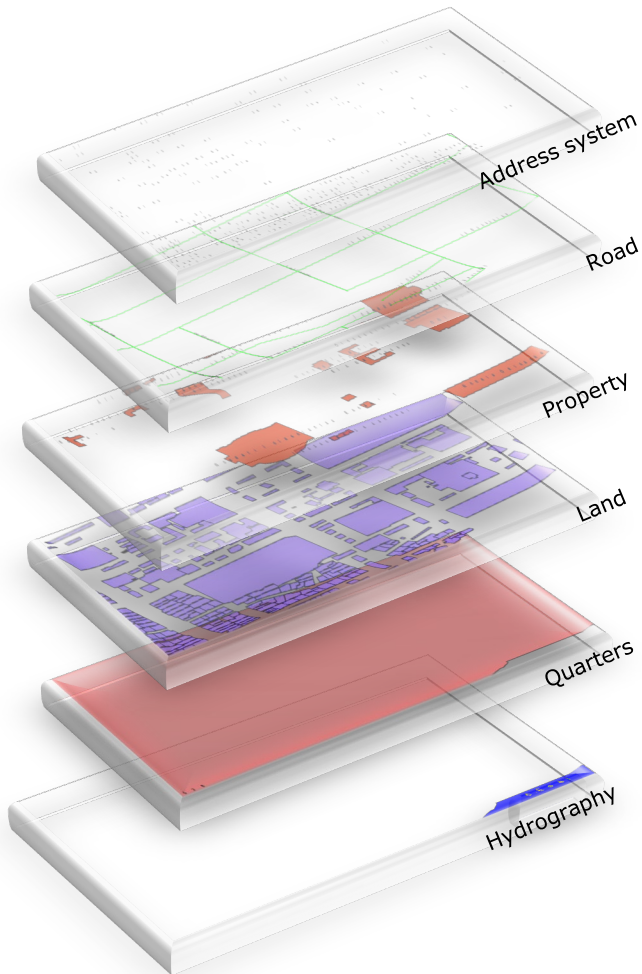
### Geoportal



- ☐ Within the framework of the Norwegian project "Maps and Statistics for Sustainable Development", a Geoportal has been developed to provide government and other authorities with access to photo maps.
- ☐ photomaps and line maps will support the production and publication of statistics in this web portal.
- ☐ aerial photography results will be used as a base map in the Geoportal.

# Strategic Pathway 5: Innovation

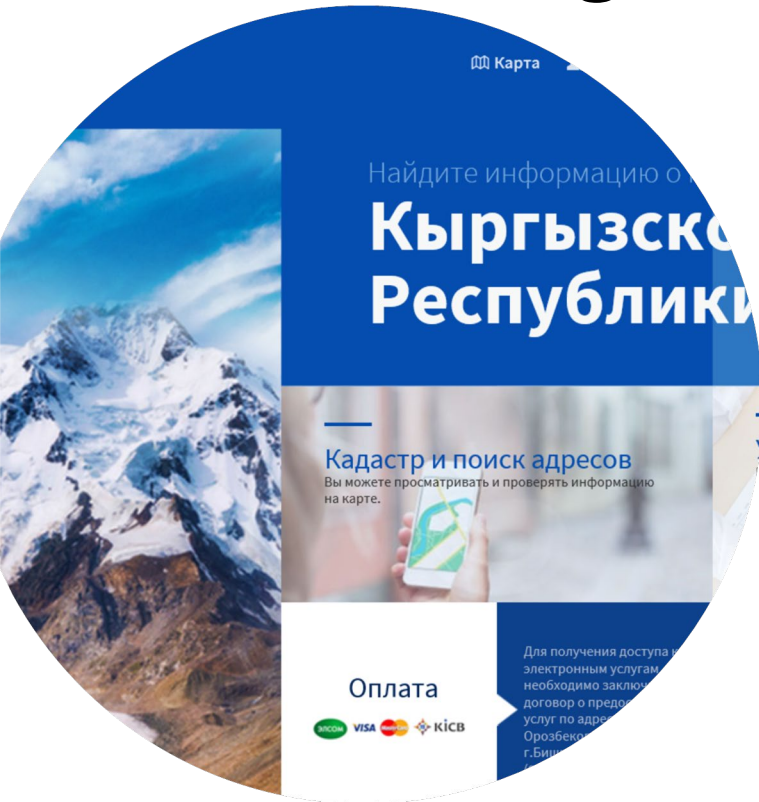
## NSDI pilot project with the German Society for International Cooperation (GIZ)



- The pilot areas of Chui Tokmok and Uzgen have been identified;
- Existing data have been prepared;
- Developed ToR for digital mapping;
- A web portal for NSDI is being developed (it is planned to launch a pilot mode in March 2021);
- The base layers are prepared for the NSDI.

## Strategic Pathway 5: Innovation

### Integrated cadastral system for NSDI



- Basic datasets (cadastre and registry), new electronic services from SIS - Current data is available to users online for the whole country
- Scanning archival documents in all 49 offices

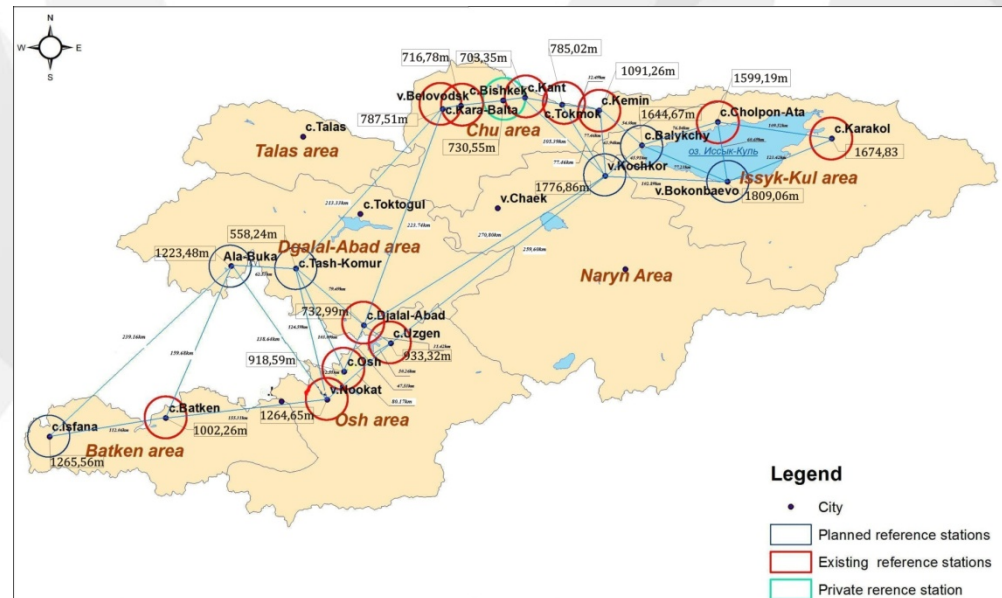
# Strategic Pathway 5: Innovation

## Implementation of GPS technology



### Established:

- 23 GNSS permanent base stations;
- 95 first order reference points;
- Control Centre for GNSS network “KyrPos”;





## Strategic Pathway 8: Capacity and Education

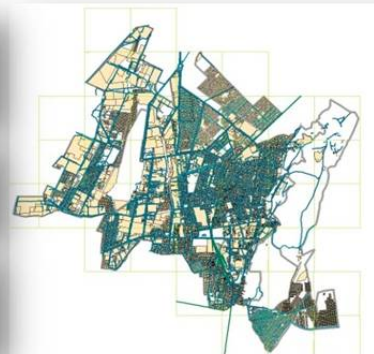
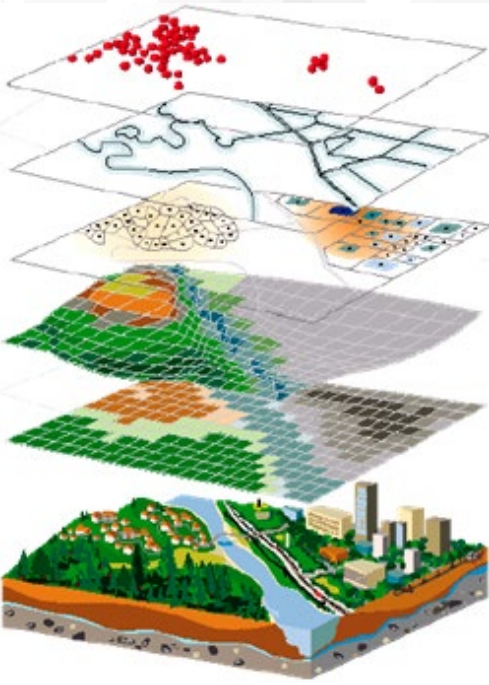


- ☐ 4 Geo-portals in municipal level;
- ☐ 5 Geo-portals in State agencies;
- ☐ 3 University courses on geo-informatics;
- ☐ GIS software is installed in all LROs;
- ☐ Trainings on GIS;
- ☐ Trainings on GPS / GNSS surveys;



# Strategic Pathway 7: Partnerships

**Purpose: Creating a digital index maps, which will be used in the future as the basis for the National Spatial Data Infrastructure (NSDI) .**



# Strategic Pathway 6: Standards



- Guidelines on the management of digital cadastral maps in the Kyrgyz Republic;
- Guidelines for quality assurance and quality control;
- Cadastral Classification System object designation administrative-territorial units of the Kyrgyz Republic;
- Classification of SYMBOLS for Cadastral Structure;
- Instruction for fixed cadastral Points of survey.

# Strategic Pathway 7: Partnerships



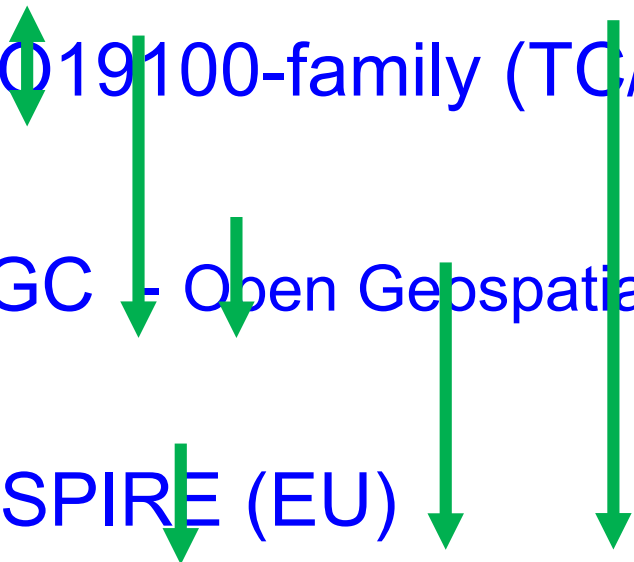
- MoU on NSDI, signed by 12 State Institutions;
- 5 Municipalities signed agreement with State agency on land resources to connect to Geo-portal;
- 3 agreements with Universities for collaboration on NSDI





# Strategic Pathway 6: Standards

## International Geographical Standards

- ISO 19100-family (TC/ 211) / CEN TC/ 287
  - OGC - Open Geospatial Consortium
  - INSPIRE (EU)
  - NATIONAL data models and services
- 

# Strategic Pathway 6: Standards

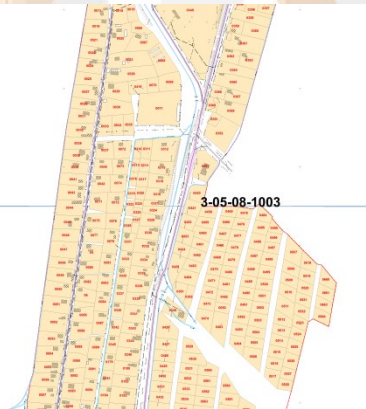
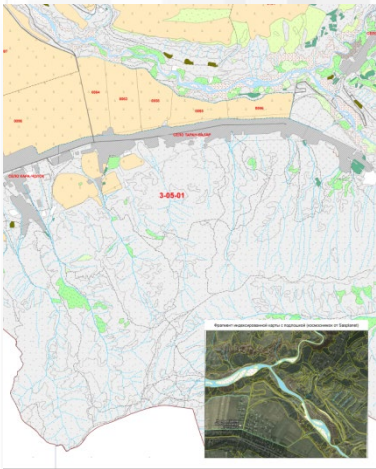
## ISO 19100 Family of Standards

- ISO 19103 CSL - Conceptual schema language
- ISO 19107 Spatial schema
- ISO 19108 Temporal schema
- ISO 19109 Rules for application schema
- ISO 19110 Methodology for feature cataloguing
- ISO 19115 Metadata
- ISO 19118 Encoding
- ISO 19119 Services
- ISO 19128 WMS - Web map server interface
- ISO 19136 GML - Geography Markup Language
- ISO 19142 WFS - Web Feature Service
- ISO 19143 FE- Filter encoding
- ISO 19152 LADM
- .....

# Strategic Pathway 9: Communication and Engagement

## FOR:

- ✓ land and real estate tax;
- ✓ statistics and population record;
- ✓ real estate market analysis;
- ✓ record on property rights;
- ✓ pasture management;
- ✓ inventory of forest lands;
- ✓ share GNSS/GPS correction data.



The background features a series of vertical light gray stripes of varying widths. Overlaid on these are several concentric circles. Most circles are light gray and semi-transparent, creating a layered effect. Two circles are a distinct orange color, also semi-transparent, positioned in the upper right and lower left areas. The text is centered horizontally and vertically.

**THANKS for your attention!!!**