



BADAN INFORMASI
GEOSPASIAL

DATASHARING IN INDONESIA

BIG(IGA) PERSPECTIVES

Rachman Rifai

Head

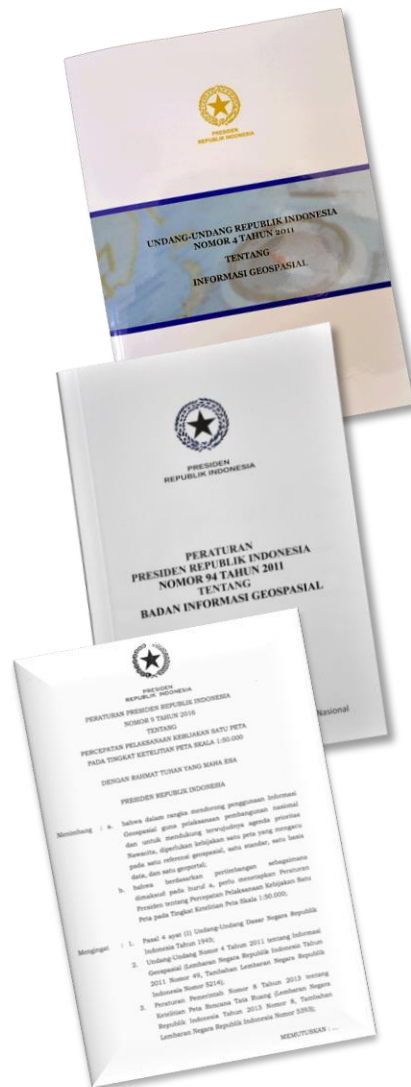
Center of Management and Dissemination Of GI

**Regional Workshop for
Promoting the Asia Pacific Geospastial Information Platform**



OPEN DATA AND DATA SHARING POLICY

LAWS AND REGULATION CONCERNING GEOSPATIAL INFORMATION



Law No. 4 / 2011 : Geospatial Information

Presidential Reg No. 94 / 2011 : Roles and Functions of Geospatial Information Authority (BIG)

Presidential Reg No. 9 / 2016 : Acceleration of One Map Policy

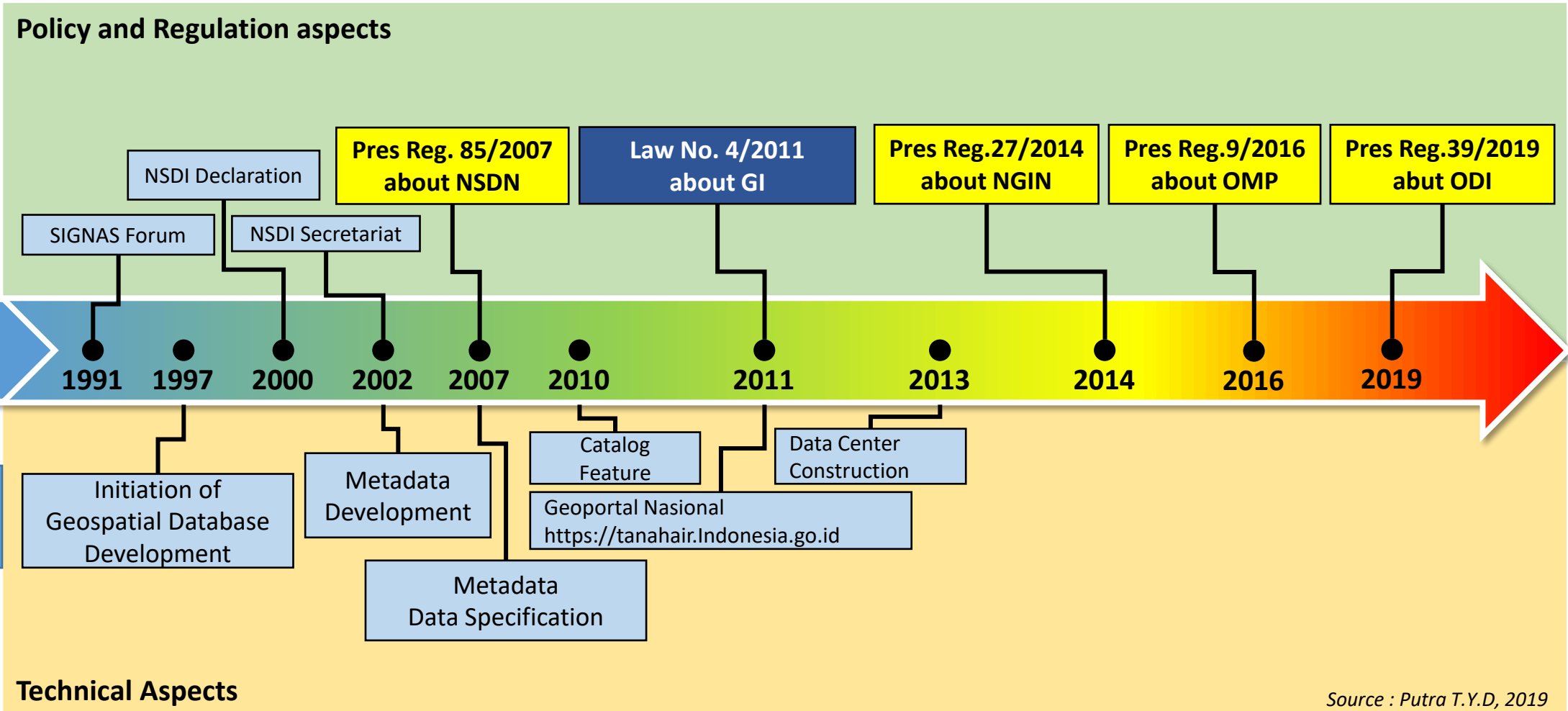


Presidential Reg No. 85 / 2007 : National Geospatial Data Network (JDSN) → expanded to be PerPres No. 27 / 2014 National Geospatial Information Network (JIGN)

Presidential Instruction No. 6 / 2012 : Provision, Use, Quality Control, Processing, and Distribution of Ortho- Rectified Hi-Res Satellite Imageries

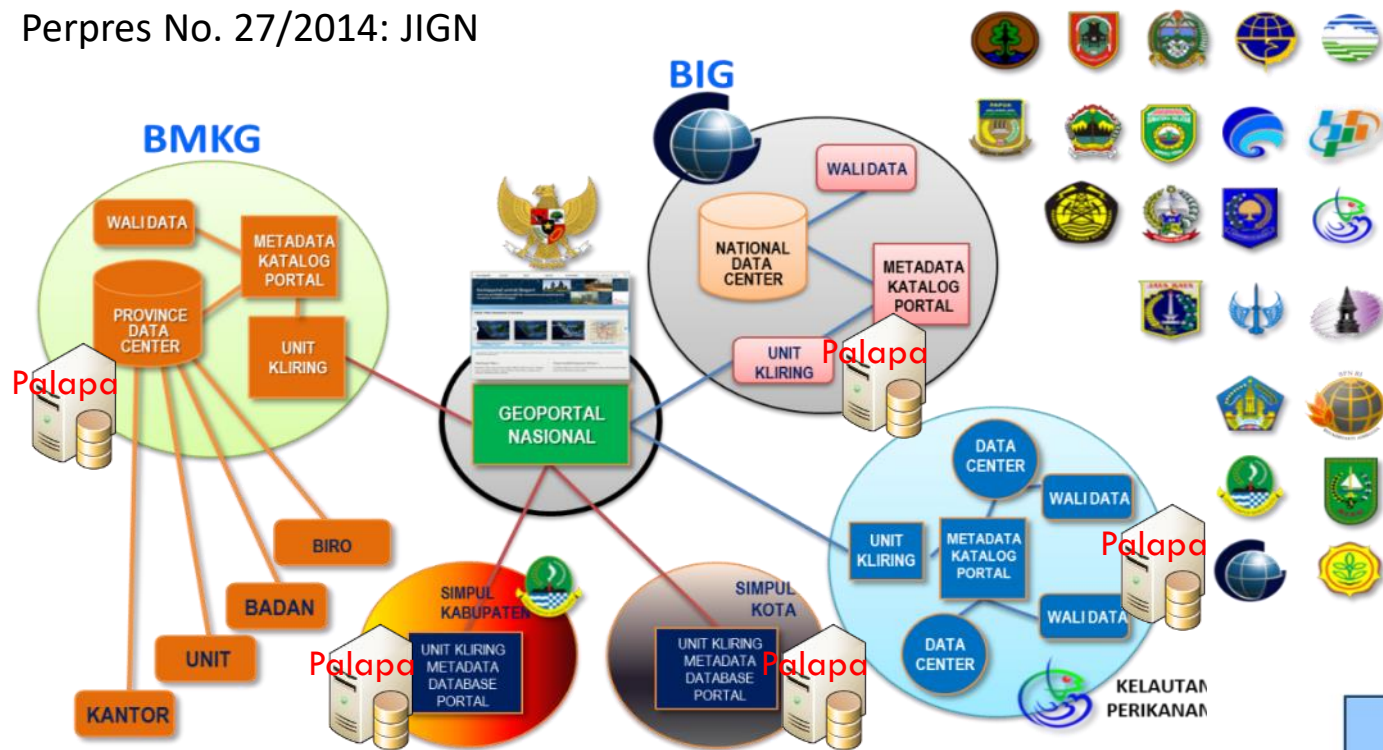
Presidential Reg No. 39 / 2019 : Indonesia One Data Policy

History/timeline of Geospatial Information Regulations in Indonesia



National Geospatial Information Network (current National Policy)

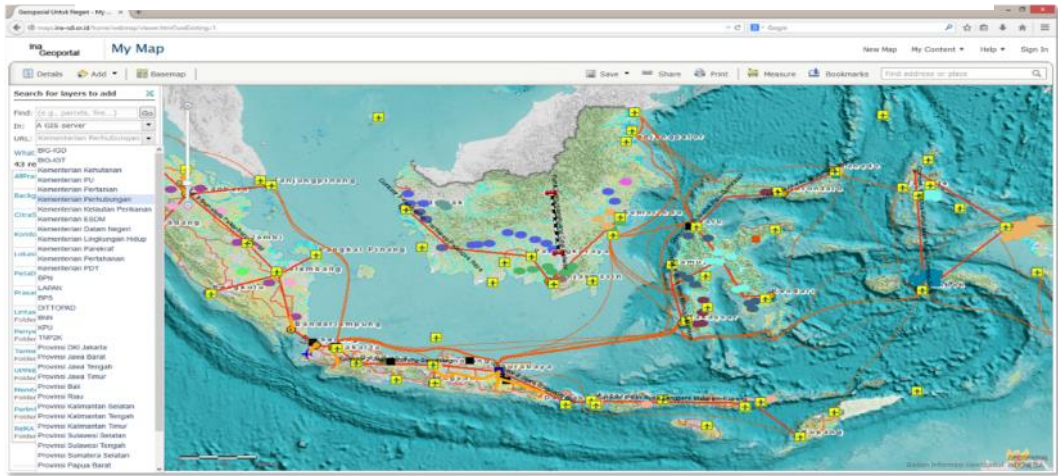
Perpres No. 27/2014: JIGN



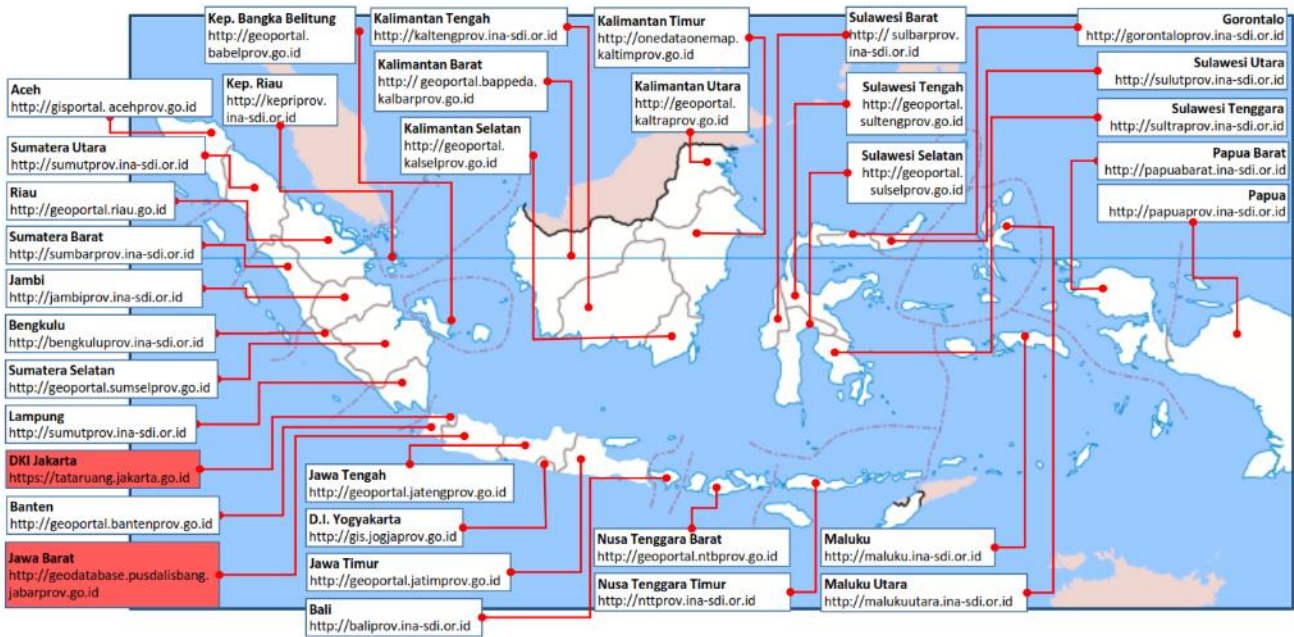
Node Network Status

| | TARGET | CONNECTED | TO DO |
|-----------------|--------|-----------|-------|
| Ministry/Agency | 57 | 29 | 28 |
| Province | 34 | 34 | 0 |
| Regency/City | 514 | 183 | 331 |
| PPIDS | 34 | 21 | 13 |

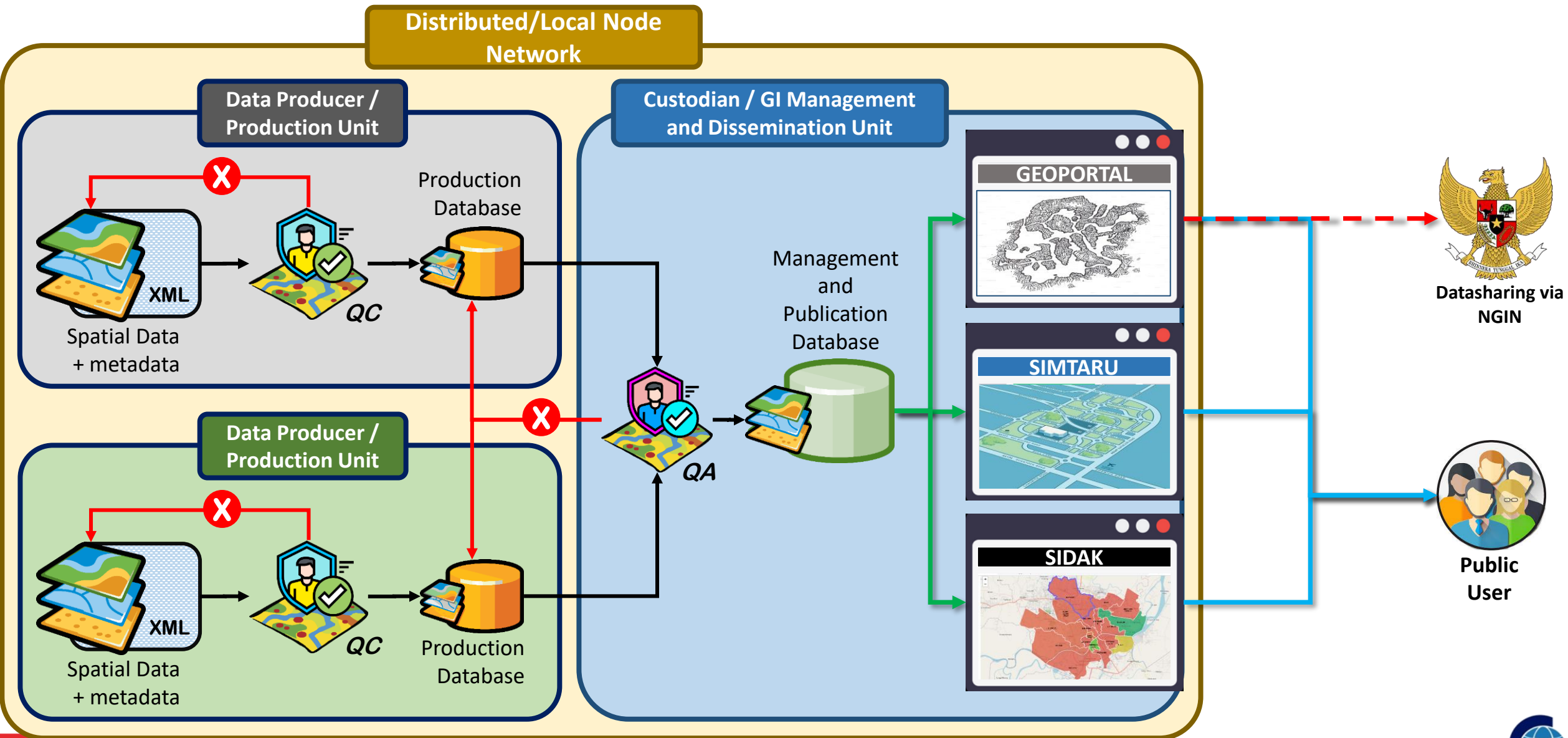
Distributed Node Network Connected to Ina-Geoportal



Province's Geoportal Addresses

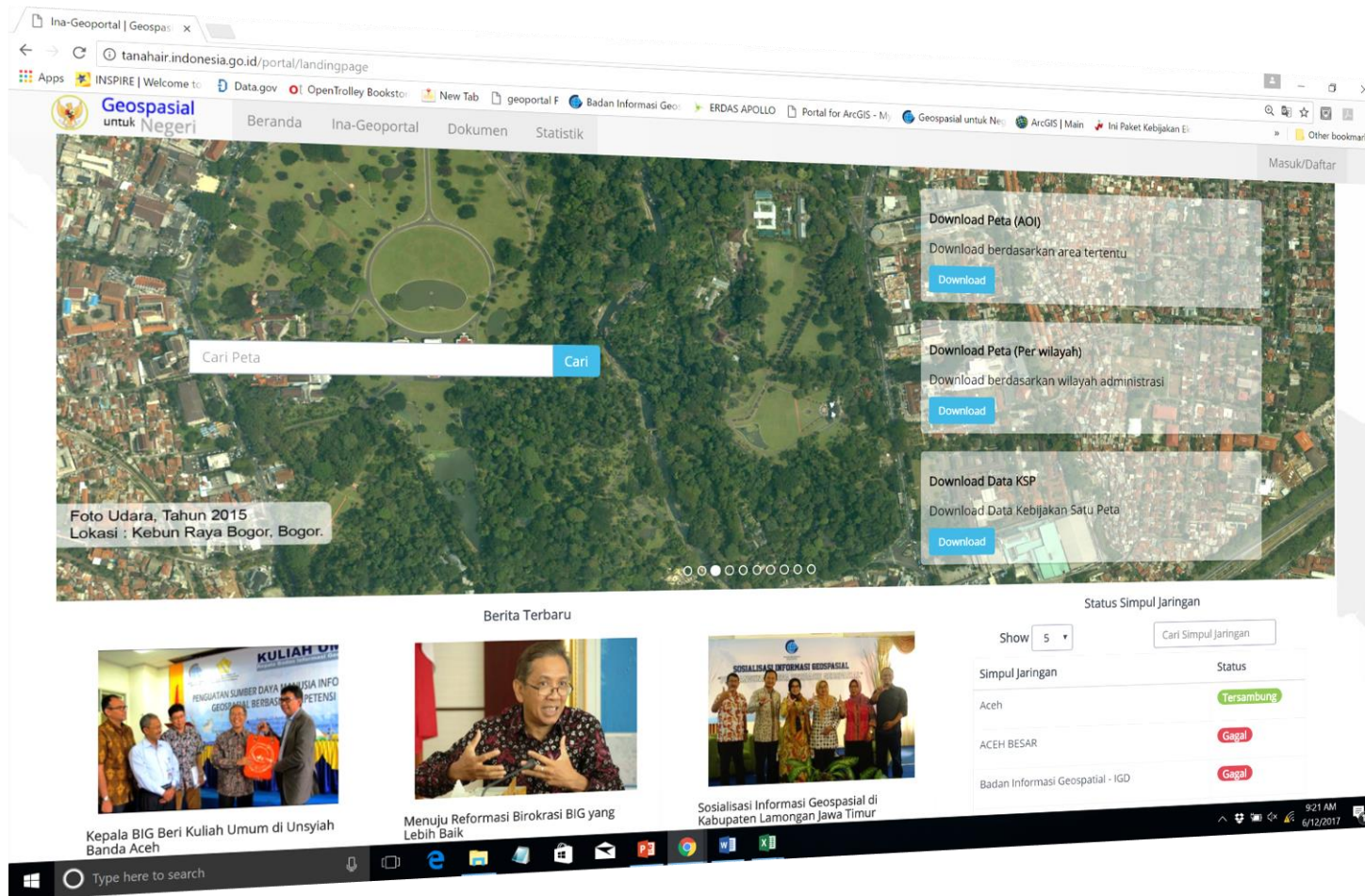


Utilization of Govt Node Network for Local Spatial Data Management



Ina-GeoPortal as National Geoportal :

<https://tanahair.indonesia.go.id>



CAPABILITIES:

- ❖ SEARCHING
- ❖ INTEGRATION
- ❖ DATA SHARING
- ❖ DOWNLOAD MAPS
- ❖ APPS SHARING
- ❖ PRODUCE THE MAP
- ❖ PUBLISH MAPS
- ❖ ACCESSIBLE VIA MOBILE DEVICES

• **EMPOWERING SOCIETY** TO USE GEOSPATIAL INFORMATION IN **ACCURATE AND ACCOUNTABLE**

OVERVIEW ONE MAP POLICY (Current National Policy)

**PRESIDENTIAL
DECREE
NO. 9 / 2016**

About Acceleration of Implementation One Map Policy at level scale of 1:50.000

- **Article 8**
Thematic maps custodian ... have duty to: ...b. manage and provide acces of share data through **National GI Network**.

OBJECTIVES OF ONE MAP POLICY



1 STANDARD
REFERENCE
DATABASE
NATIONAL GEOPORTAL

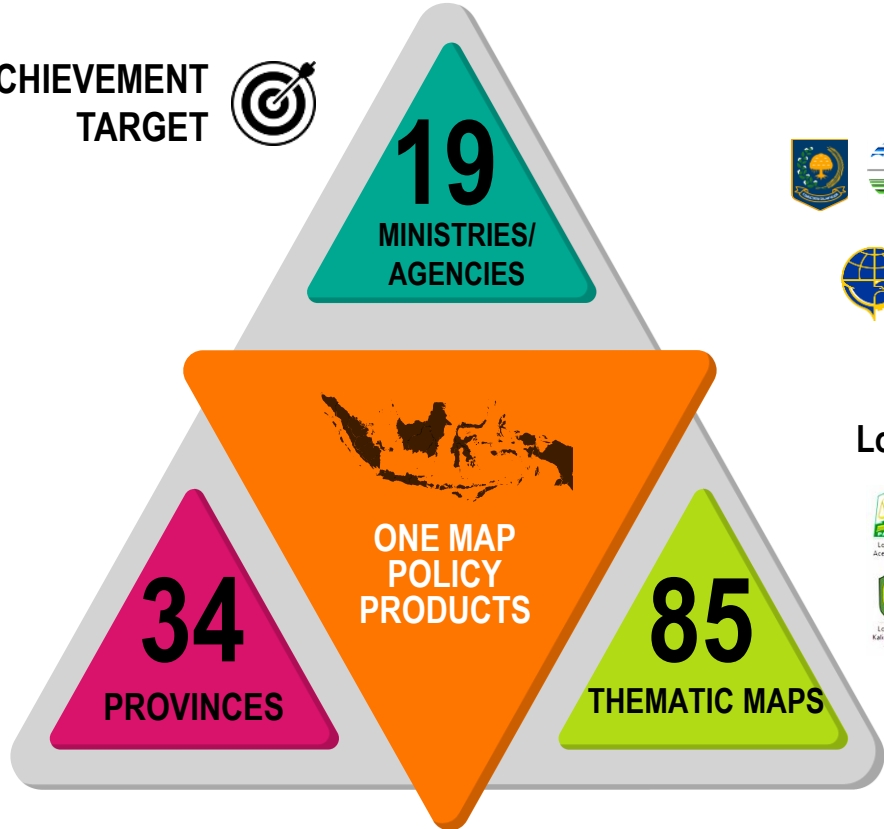
BENEFITS OF ONE MAP POLICY

- As National References for:
- Reference for geospatial data revision and update
 - More accurate spatial planning arrangement
 - Policy arrangement and decision making more accurate and qualified

MAIN ACTIVITIES OF ONE MAP POLICY

- Compilation
- Integration
- Synchronization

**ACHIEVEMENT
TARGET**



**19 Ministries/Agencies as
Custodians:**



Local Government Province/Regency/City in 34 Provinces:



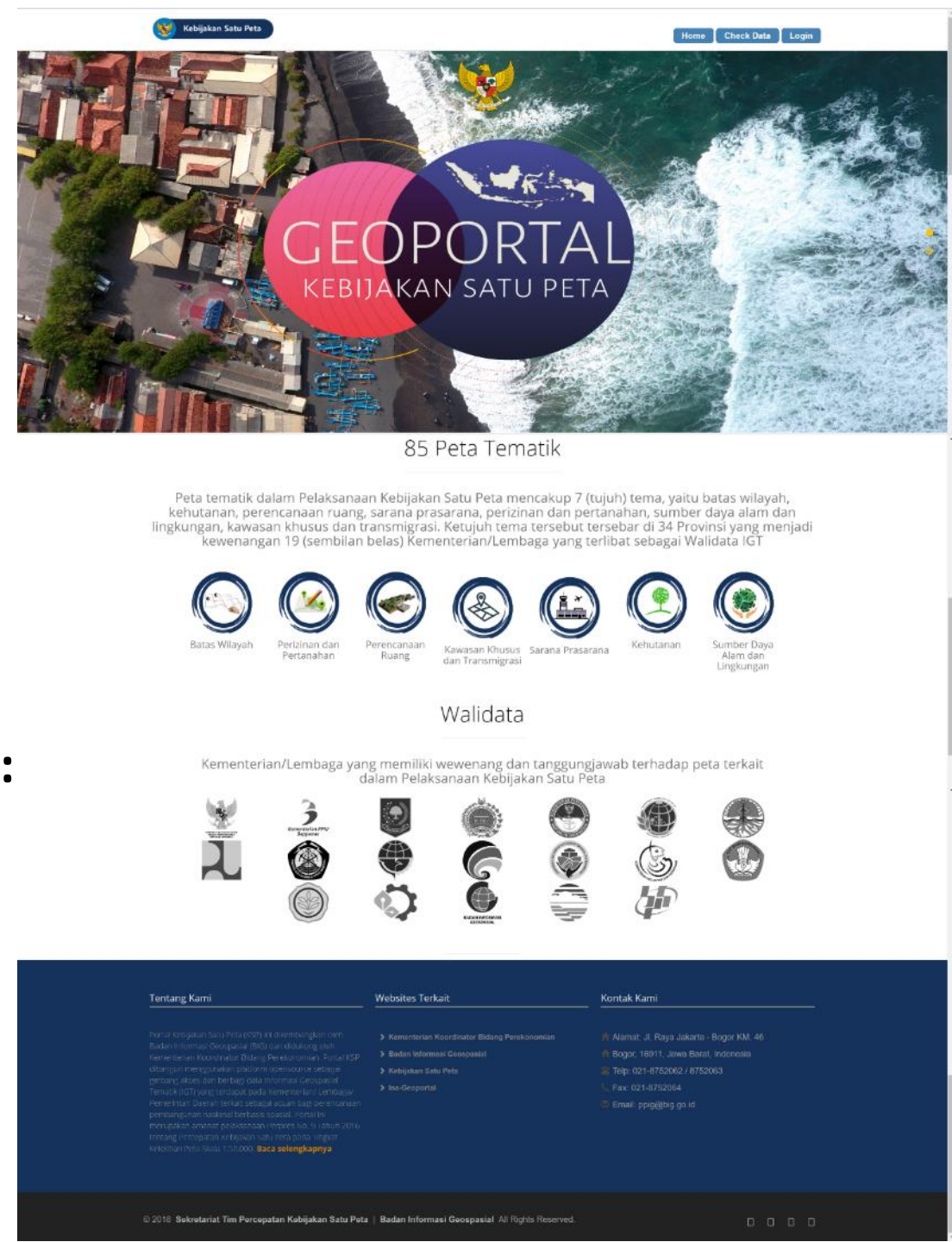
The One Map Policy is an effort to create an **accurate and accountable map as a common reference** in development planning and space utilization. The implementation of One Map Policy coordinates internally at the Coordinating Ministry for the Economy and across sectors, and involves Provincial / Regency / City Governments in 34 provinces.

Landing Page OMP Geoportal



85 Thematic Maps (>130 shp), in 7 groups :

- Boundary
- Permits and Land/agrarian
- Spatial Planning
- Special Zone and Transmigration
- Infrastructure and faciities
- Forestry
- Environment and Natural Resources



ONE DATA INDONESIA (current National Policy)

INFORMATION TECHNOLOGY GOVERNANCE

DATA GOVERNANCE

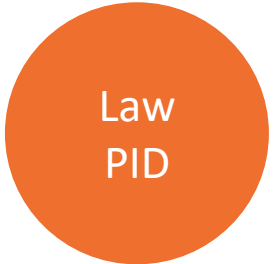
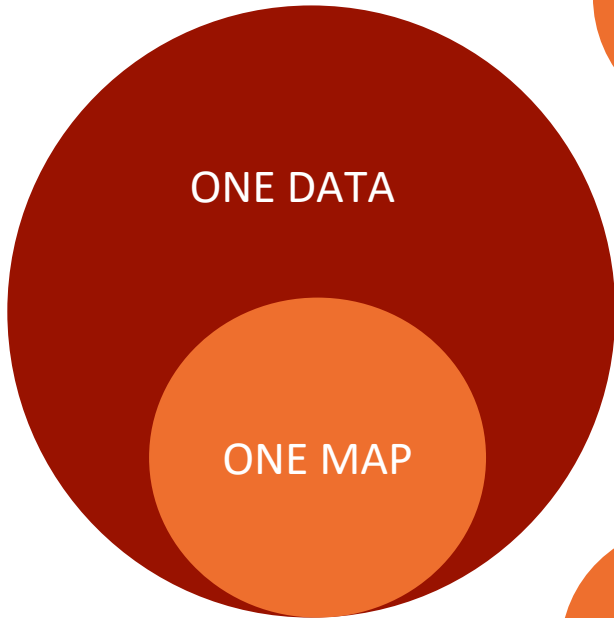
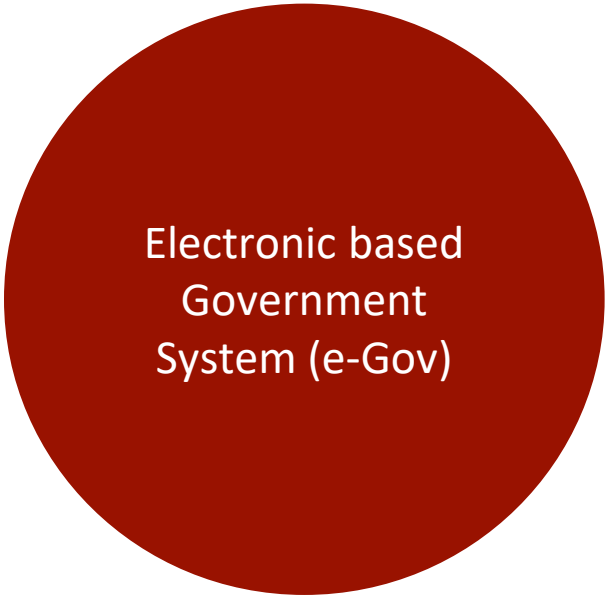
ONE DATA STANDARD



ONE STANDARD METADATA



DATA INTEROPERABILITY



New Regulation



Existing Regulation

Source : SDI Secretariat, 2020.

INTEGRATION OF ONE MAP POLICY AND ONE DATA POLICY

IMPLEMENTATION OF ONE MAP POLICY

President Reg. No. 9 / 2016 about implementation of OMP

Compilation

Integration

Synchronization

IMPLEMENTATION OF GEOSPATIAL INFORMATION

Law No. 4 / 2011 about Geospatial Information

Acquisition DG

GD & GI
Processing

Store and Secure
of GD & GI

Publication of GD
& GI

Utilization of GI

Data Design

Data Collection

Data Check

Data Publication

1. Data Production by data producer
2. Submission of data from producers to custodian

IMPLEMENTATION OF ONE DATA POLICY

President Reg. No. 39 / 2019 about One Data Indonesia



Pengguna

Pres Reg No. 27 tahun 2014
about National GI Network

Jaringan Informasi
Geospasial Nasional



InaGeoportal



Portal SDI

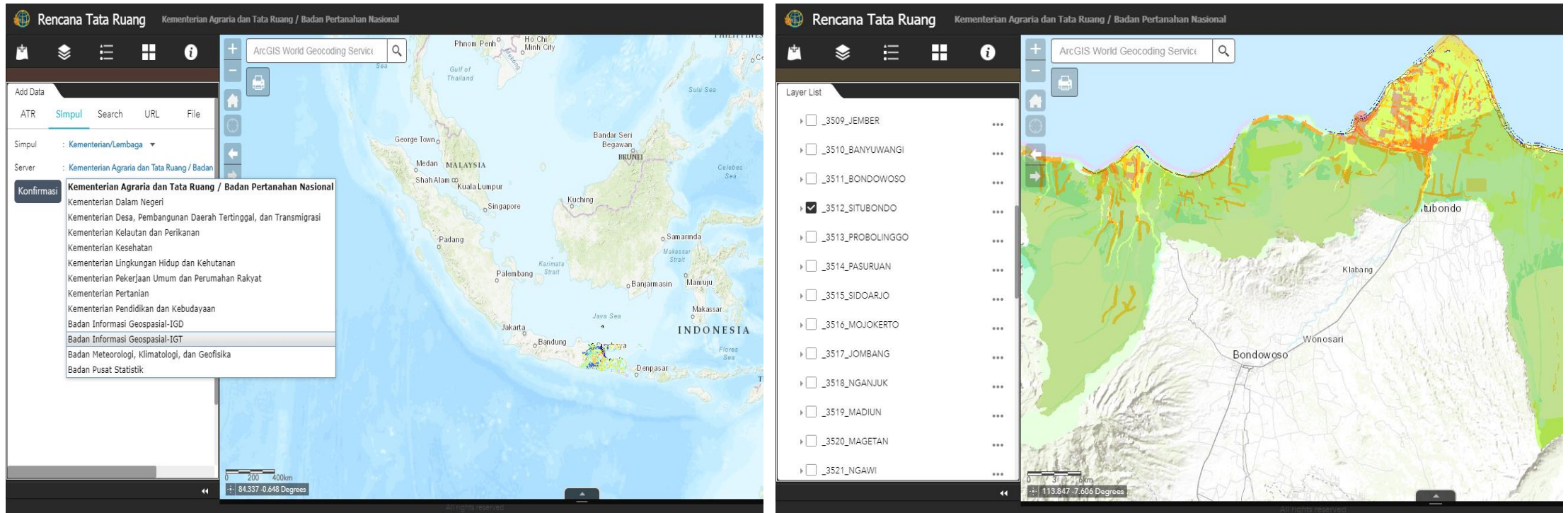
Data Spasial

Data Statistik

Portal One Data Indonesia

DISTRIBUTED NODE NETWORK CONNECTED TO SPATIAL PLANNING WEB GIS

<http://gistaru.atrbpn.go.id/rtronline/>



Web Gis Taru (Managed by Ministry of Agrarian and Spatial Planning) connected to NGIN and utilize GI by overlay spatial planning map w flood vulnerable maps from BNPB (National Disaster Management Authority).

CONCLUSION – BIG STATEMENT

To address several questions come up from secretariat, BIG propose several point for further actions :

- 1. How to work better together to promote the sharing and use of geospatial information services and products in the asia pacific region**
 - formulate commons vision, mission, goals and benefits among countries member
 - increase the number of regular meetings among members as a forum to discuss current issues related to geospatial datasharing
 - determine priority dataset to share, for example : disaster, environment or tourism
 - promote cooperation in term of knowledge and technology sharing, through exchange of staf and training related to geospatial information utilization.
- 2. Explore and share good frameworks, models and practices to share and use geospatial information services and products**
 - promote cooperation among country member to develop geospatial aplication for internet of thing, bigdata and artificial intelligent implementation
 - promote implementation of open standart datasharing, for example ogc api
- 3. Exchange initial ideas on building the un-ggim-ap geospatial service center under the UN-GGIM-AP secretariat to provide better services to member countries of UN-GGIM-AP in a systematic way**
 - develop regional data center and portal as a hub for geospatial datasharing in the region
 - strengthening datasharing initiatives based on open data formats and services (wfs, wms or ogc api)
- 4. Identify the future direction and work plan**
 - a. Strengthening regional cooperation with a focus on developing policies, institutions, human resources, standards and knowledge and technology.
 - b. need necessary another intensive forum or focus group discussion to address this matter
 - c. Some are already explained in the power point



KADAM INFORMASI
REKAPITAL

THANK YOU

6.490°S 106.849°E