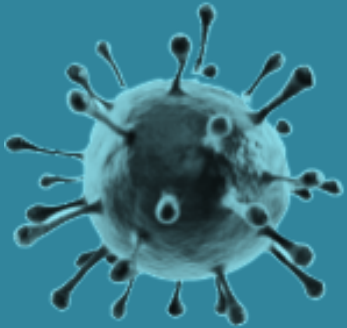
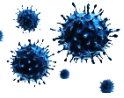




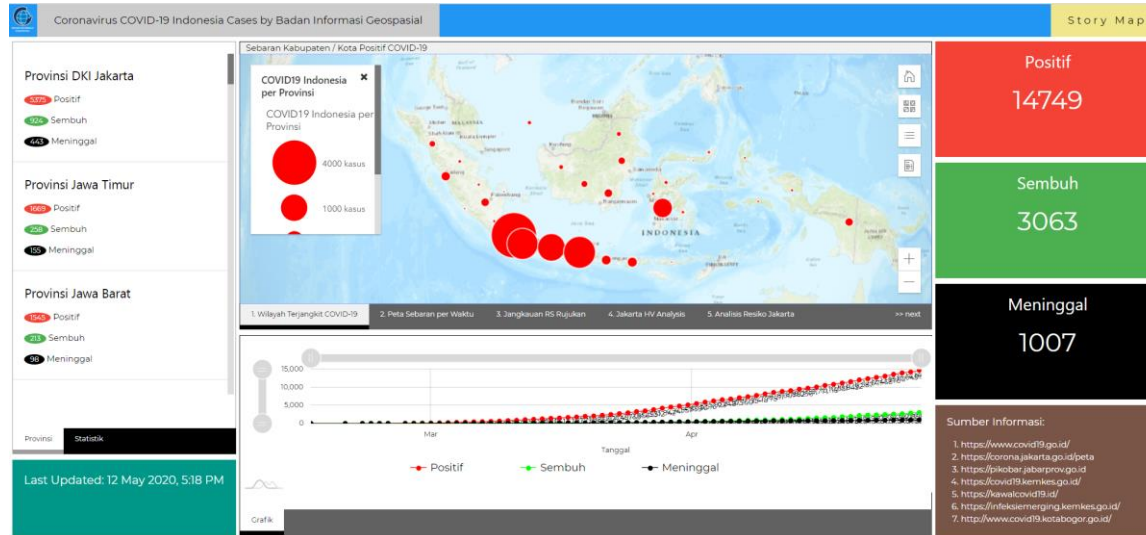
GEOSPATIAL INFORMATION In the Fight against COVID- 19 in INDONESIA



Antonius Wijanarto, Gunawan, Ferrari Pinem, Diah R. Minarni
WG on Integrating Geospatial Information and Statistics,
UN-GGIM-AP



Geospatial Information Dashboard

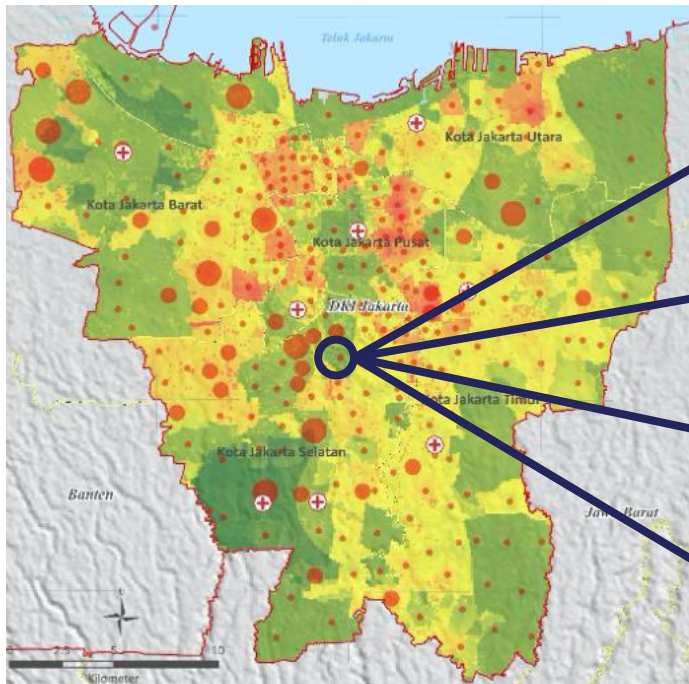


Daily updated, can be accessed through: covid19.big.go.id

The COVID-19 pandemic was first reported to have spread to Indonesia on March 2, 2020, when a dance instructor and her mother were infected from a foreign visitor. By April 9, the pandemic had spread to all 34 provinces after Gorontalo reported its first case, with Jakarta, East Java, and West Java being the worst-hit.

Instead of implementing a national lockdown, a local government can request for large-scale social restriction (PSBB) to the Ministry of Health. Once approved, a date will be set by the local government and will run for at least two weeks.

One Map - One Data Policy Framework



BNPB

Vulnerability Data
National Disaster Management Agency of Indonesia



National Suspect Data, Health Facilities Data
Ministry of Health of the Republic of Indonesia



**BADAN INFORMASI
GEOSPASIAL**

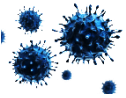
Basemaps (Landuse, Road network, Area
Boundary, Building, Basic infrastructure, PoI)
Geospatial Information Agency of Indonesia



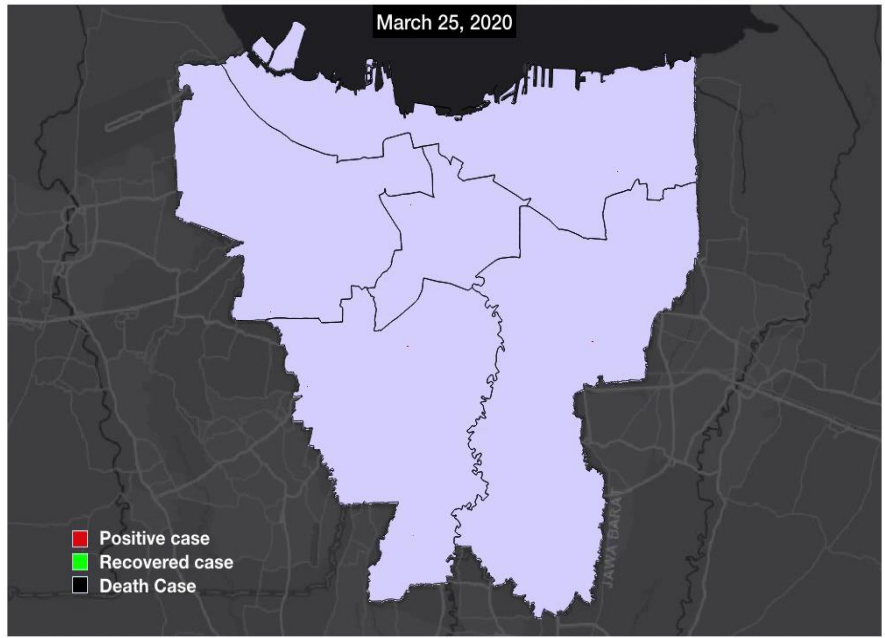
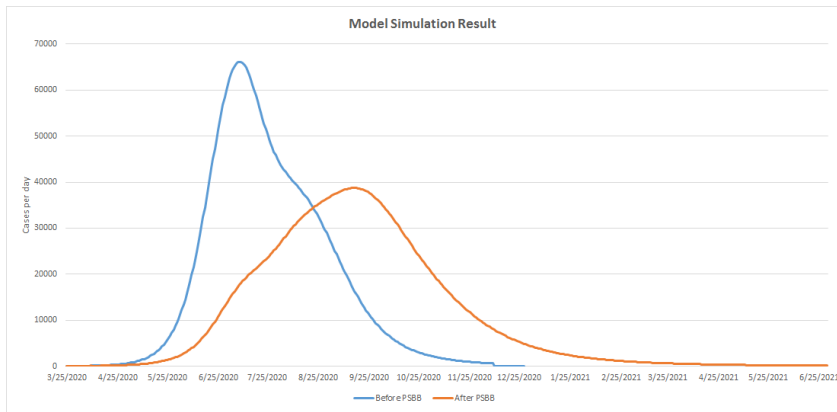
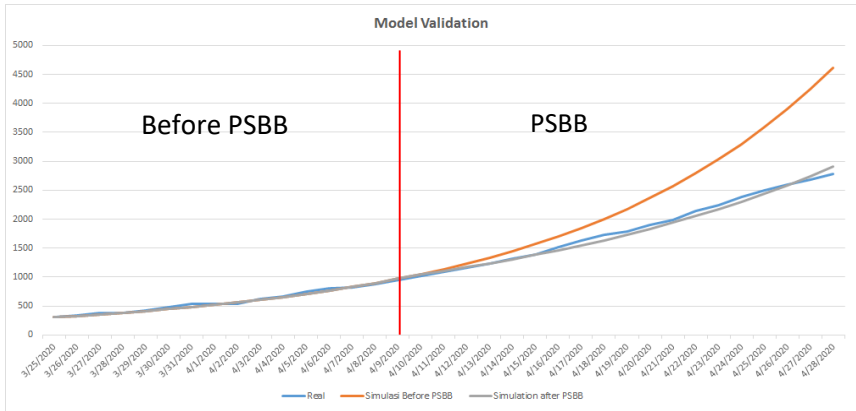
Updated Local Suspect Data
Local Government



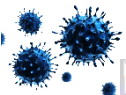
The importance of One Map and One Data regulations as integrated data sharing framework in order to geospatial information utilization for COVID-19 response.



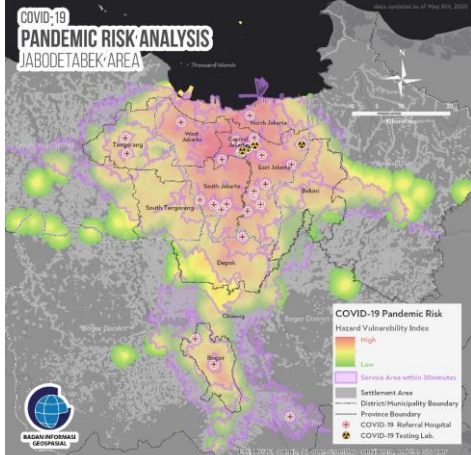
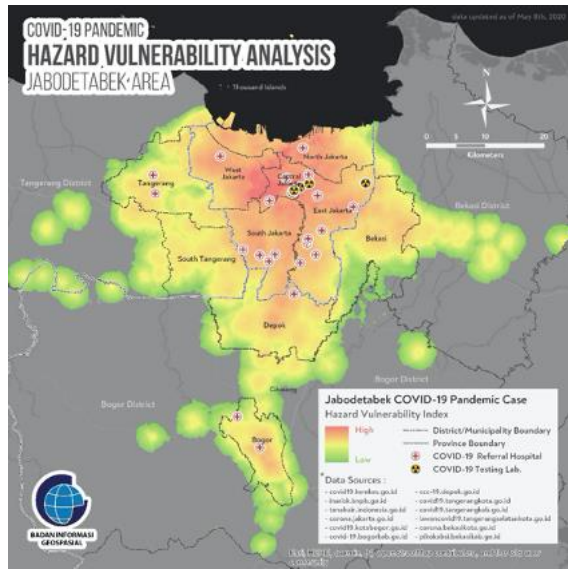
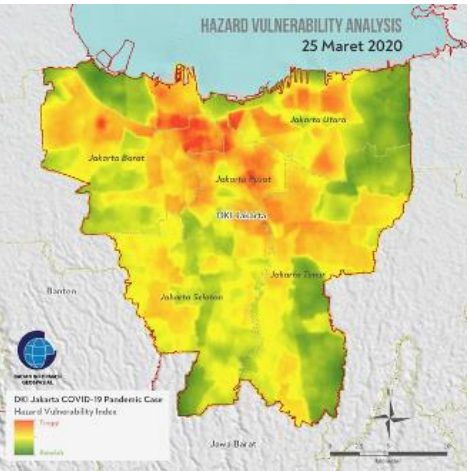
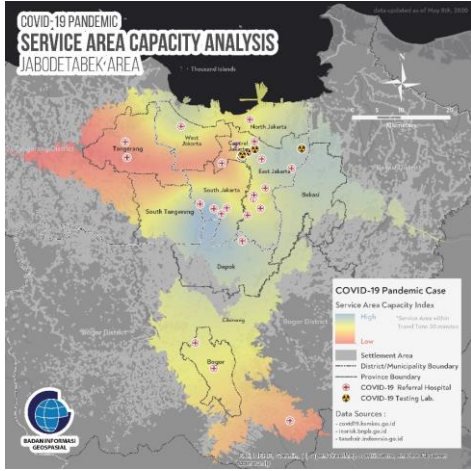
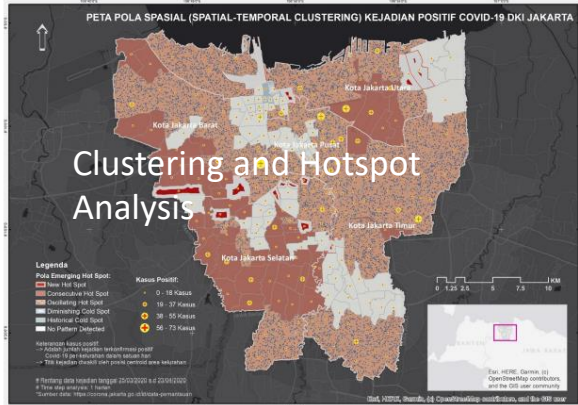
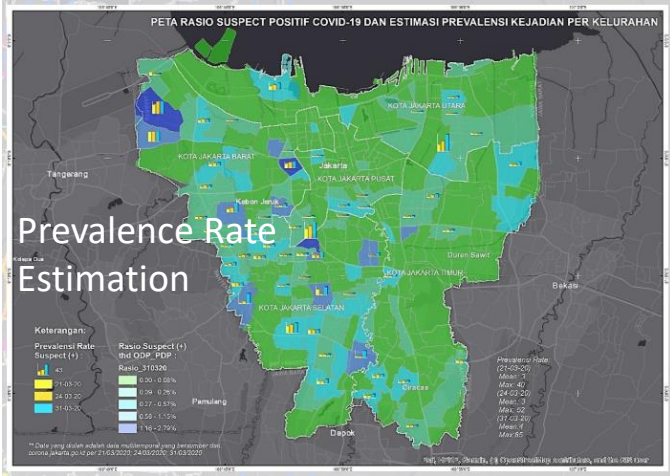
Dynamic Model – SIR Model

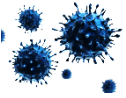


The implementation of the PSBB has successfully flattened the curve



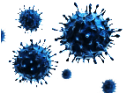
Spatial Analysis Maps





Remarks

- Efforts of demonstrating the importance of GI – Statistics Integration can be successful if developed case by case. COVID-19 is a real case example.
- Lesson learned (government perspectives): GI – Statistics Integration (Geo-Statistics) is very powerful that can really describe “what happens somewhere at specific time”, but good coordination amongst ministries and agencies is also important.



Antonius B. WIJANARTO

- Chair of the Working Group on 'Integrating Geospatial Information and Statistics', UN-GGIM-AP
- Deputy Head for Thematic Geospatial Information, Geospatial Information Agency of INDONESIA (since June 2019)
- Head of Center for Geodetic Control Network and Geodynamics (2015 – 2019).
- PhD in Surveying, University of Tasmania, AUSTRALIA (2000)
- Bachelor of Surveying (Hons), University of Tasmania, AUSTRALIA (1996)



Thank You