

Ninth Plenary Meeting of UN-GGIM-AP

3 & 5 November 2020

Hosted by the Geospatial Information Agency of Indonesia
Badan Informasi Geospasial (BIG)



UN-GGIM-AP

REGIONAL COMMITTEE OF
UNITED NATIONS
GLOBAL GEOSPATIAL
INFORMATION MANAGEMENT
FOR ASIA & THE PACIFIC

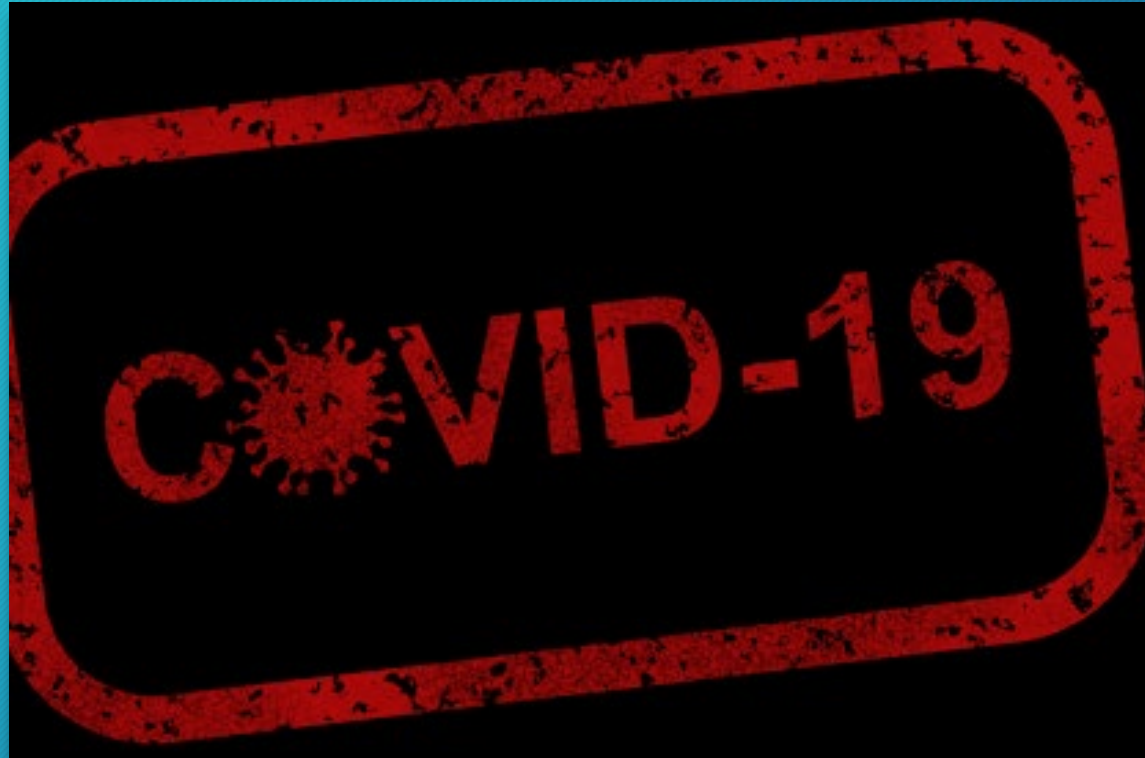
Tonga Geospatial Reference System Modernisation Update

Integrated Geospatial Information Framework (IGIF)



Global Pandemic

- National Lockdown
- Field survey was banned for months

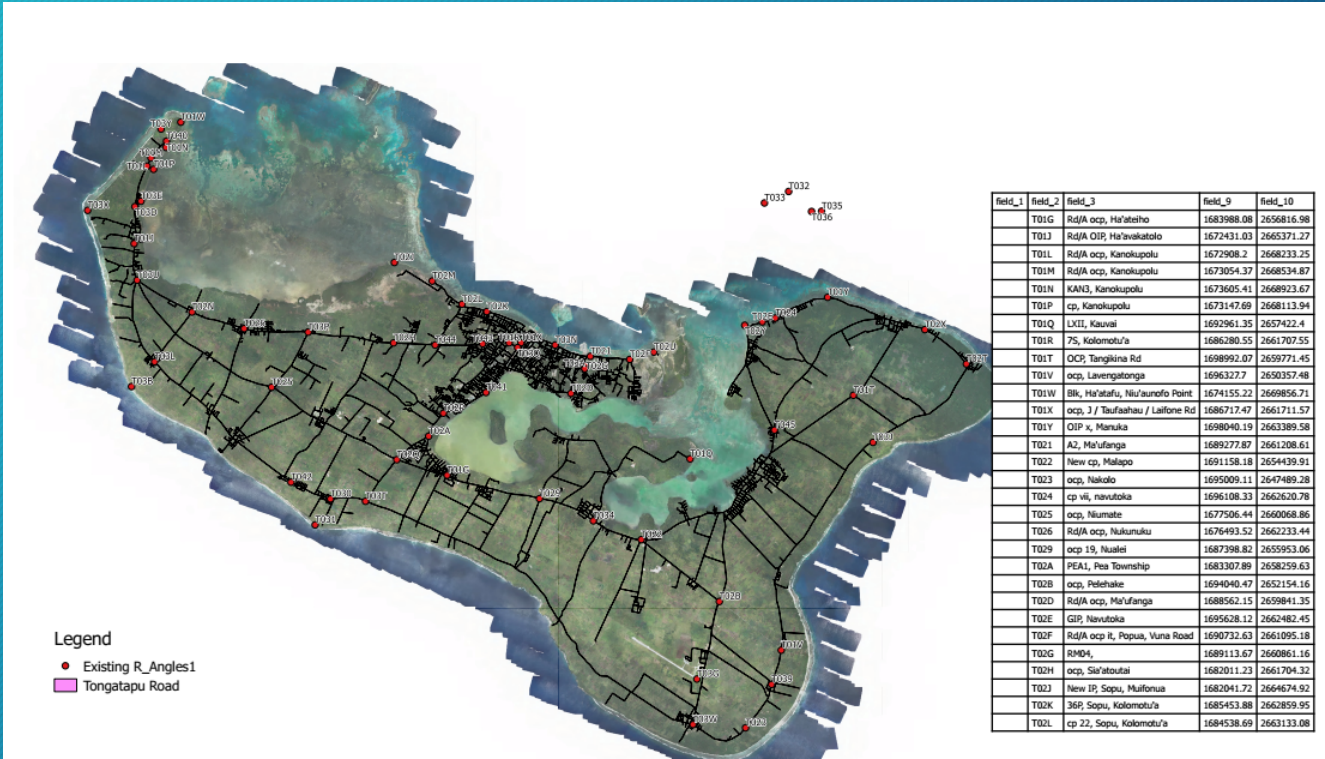


APRGP GNSS Campaign 2019 & 2020





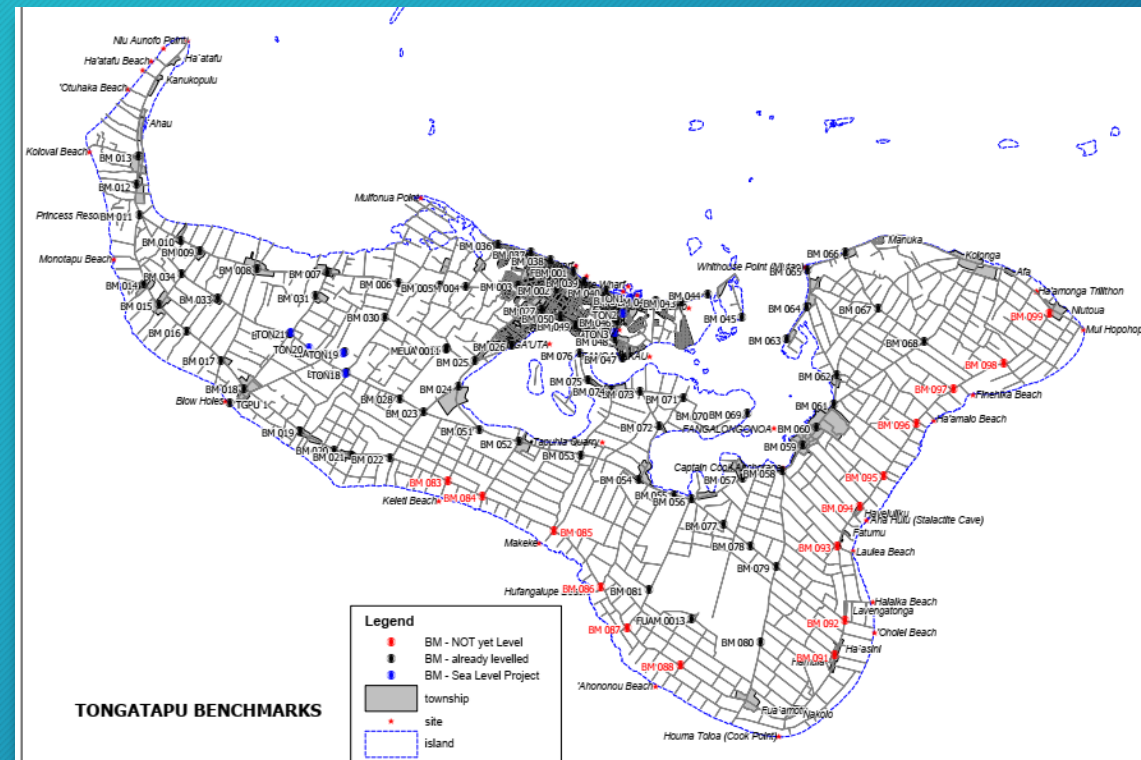
Updating Cadastral Control



field_1	field_2	field_3	field_9	field_10
T01G	Rd/A ocp, Ha'ateho	1683988.08	2656816.98	
T01J	Rd/A OIP, Ha'vakatolo	1672431.03	2665371.27	
T01L	Rd/A ocp, Kanokupolu	1672908.2	2668233.25	
T01M	Rd/A ocp, Kanokupolu	1673054.37	2668534.87	
T01N	KAN3, Kanokupolu	1673605.41	2668923.67	
T01P	cp, Kanokupolu	1673147.69	2668113.94	
T01Q	LXII, Kauai	1692961.35	2657422.4	
T01R	7S, Kolomotu'a	1686280.55	2661707.55	
T01T	OCP, Tangikina Rd	1689992.07	2659771.45	
T01V	ocp, Lavangatonga	16963277	2650357.48	
T01W	88, Ha'atafu, Niu'aunefo Point	1674155.22	2669856.71	
T01X	ocp, 3 / Taufaihu / Laitone Rd	1686717.47	2661711.57	
T01Y	OIP x, Manuka	1698040.19	2663389.58	
T021	A2, Ha'ufanga	1689277.87	2661208.61	
T022	New cp, Malapo	1691158.18	2654439.91	
T023	ocp, Nakolo	1695009.11	2647489.28	
T024	cp v6, Navutoka	1696108.33	2662620.78	
T025	ocp, Niumate	1677506.44	2660068.86	
T026	Rd/A ocp, Nukunuku	1676493.52	2662233.44	
T029	ocp 19, Nuakei	1687398.82	2655953.06	
T02A	PEAL, Pea Township	1683307.89	2658259.63	
T02B	ocp, Pelehaite	1694040.47	2652154.16	
T02D	Rd/A ocp, Mo'ufanga	1688562.15	2659841.35	
T02E	GP, Navutoka	1695628.12	2662482.45	
T02F	Rd/A ocp II, Popua, Vuna Road	1690732.63	2661095.18	
T02G	RMD4,	1689113.67	2660861.16	
T02H	ocp, Sia'atoutai	1682011.72	2661704.32	
T02J	New IP, Sopa, Mufonua	1682041.72	2664674.92	
T02K	36P, Sopa, Kolomotu'a	1685453.88	2662859.95	
T02L	cp 27, Sopa, Kolomotu'a	1684538.69	2663133.08	

Observe Benchmarks with GNSS

- Ellipsoid height to all BMs with MSL height
- Update its coordinate



Survey Mark Protection

- Installing of survey mark protection covers
- Iron and plastic covers
- Special thanks to Graeme Blick, LINZ for his assistance in securing the covers from NZ

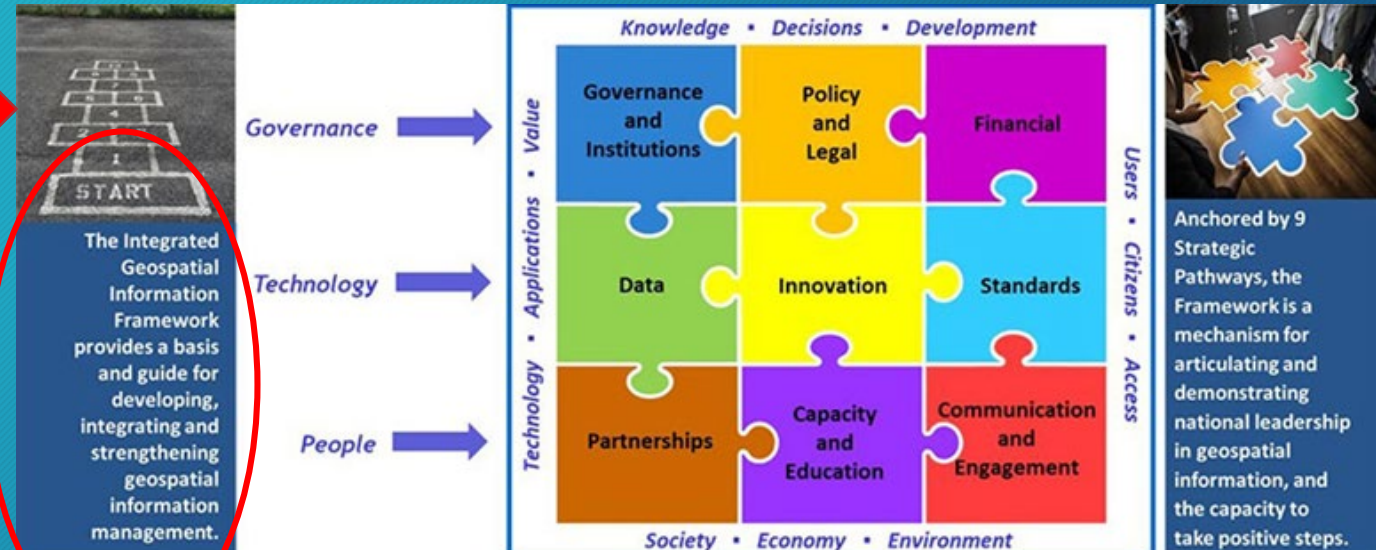


National Geospatial Action Plan-IGIF

- Modernisation of Tonga Geospatial Reference System

- Review & Update Geodetic Datum
- Development a Geiod model for Tonga
- New Height datum to cover the whole of Tonga
- National CORS Network

Integrated Geospatial Information Framework



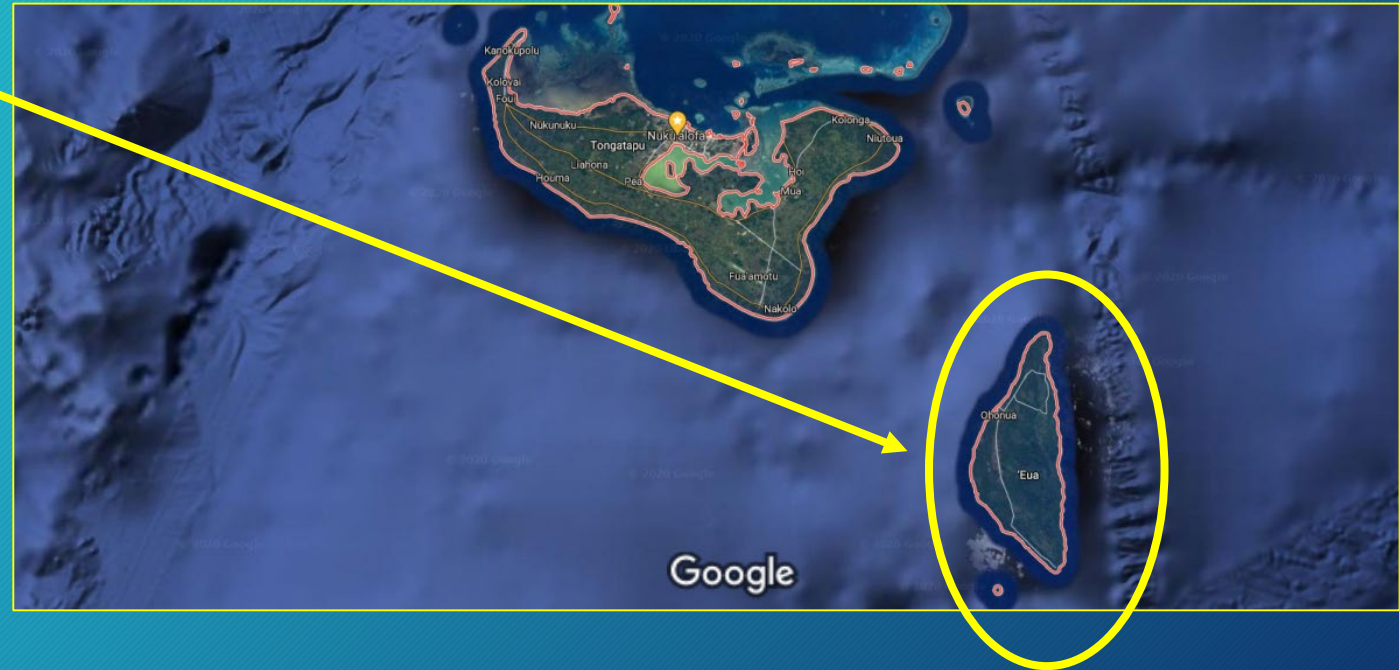
Ensure positioning information are Findable, Accessible, Interoperable and Reusable

The rest of 2020

1. Geodetic Survey in 'Eua Island

- GNSS Survey
 - 2nd Order and Cadastral Control (3rd Order)
- Levelling
- Installing Protection Covers for survey marks

2. Workshops on draft Survey Act



Thank you very much