



# **Working Group 2: Cadastre and Land Management**

## **Work Plan 2021**

**Executive Board Meeting**

**May 18, 2021**



**UN-GGIM-AP**

Regional Committee of United Nations  
Global Geospatial Information Management  
for Asia and the Pacific

[un-ggim-ap.org](http://un-ggim-ap.org)

# Key activities:

## I . Framework for Effective Land Administration (FELA)

- Working with UN-GGIM Expert Group on Land Administration and Management
- Continuing to reflect the region's requirements in the "living document"

### Nine Pathways of the Framework for Effective Land Administration

The nine strategic pathways of IGIF<sup>®</sup> guide FELA. The main areas of influence of the IGIF equally apply: people, governance, and technology. The strategic pathways are intended to guide the implementation of FELA, support the IGIF implementation more broadly, and ultimately achieve the SDGs and sustainable development. The nine FELA pathways are linked and overlap. For ease of communication in FELA, and like the IGIF, they are described independently. Linkages between the nine pathways are highlighted where appropriate.

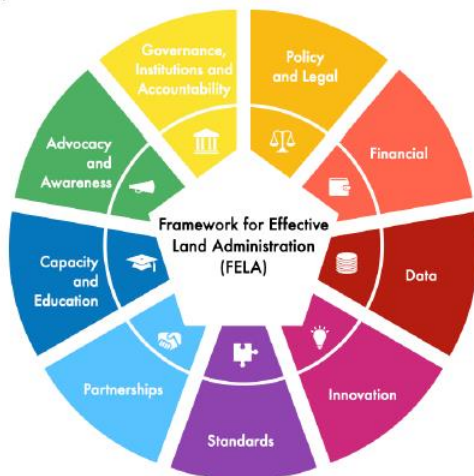
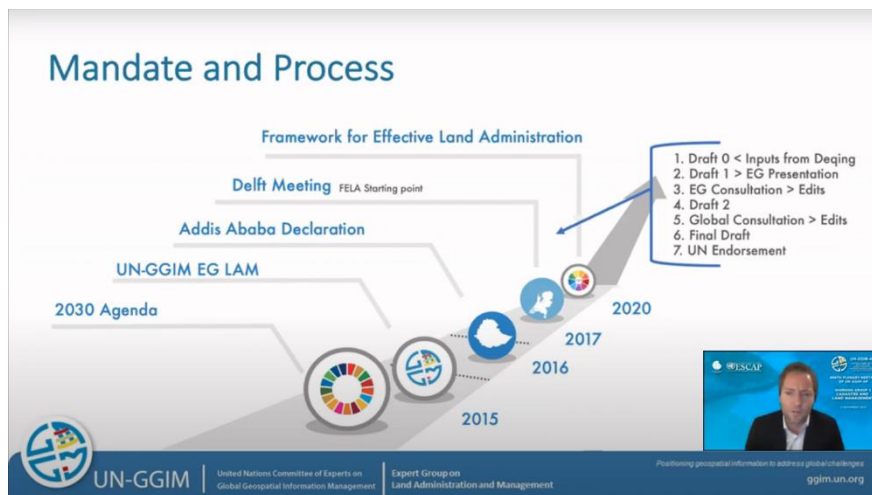


Figure 6: Nine Pathways of the Framework for Effective Land Administration

### Pathway I: Governance, Institutions and Accountability

Land administration is a societal activity both shaping and shaped by governance, institutions, and associated with accountability. All SDGs focus on the enhancement and reform of governance, institutions and associated accountabilities. IGIF identifies the themes as a standalone strategic pathway, and calls for the articulation of clear governance models, leadership, institutional structures, and a clear value proposition. These are intended as a means to strengthen multi-disciplinary and multi-sectoral participation, and a commitment to achieve integrated geospatial information.



UN-GGIM-AP

Regional Committee of United Nations  
Global Geospatial Information Management  
for Asia and the Pacific

un-ggim-ap.org

# Key activities:

## II . Geospatial Industry Digital Roadshow

- Starting March 2021 (Virtual site stays open throughout the year 2021)
- Over 700 participants from 71 countries across the world
- Digital exhibition of leading geospatial information businesses and global networks



Please visit: [www.gi-roadshow.kr](http://www.gi-roadshow.kr)



UN-GGIM-AP

Regional Committee of United Nations  
Global Geospatial Information Management  
for Asia and the Pacific

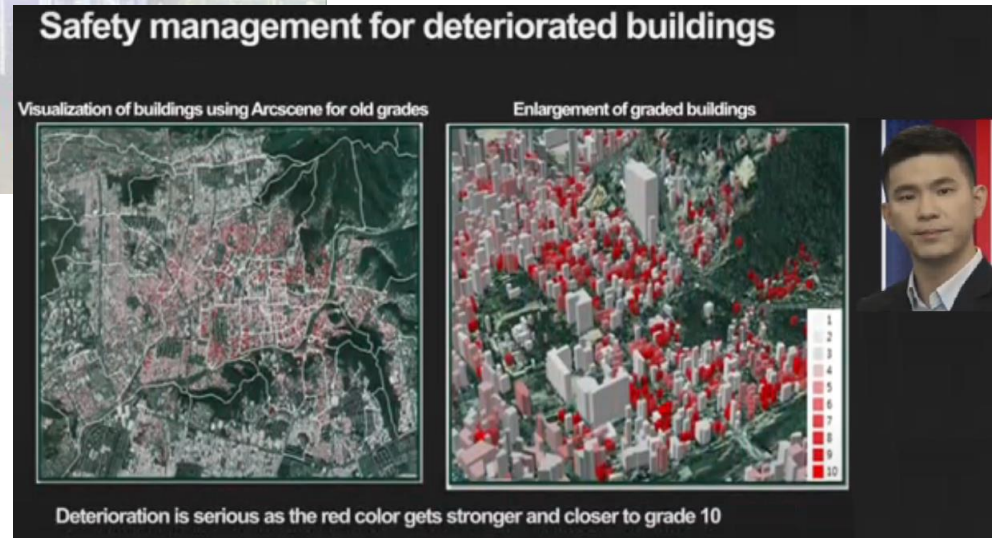
[un-ggim-ap.org](http://un-ggim-ap.org)



# Key activities:

## III. IGIF Virtual Knowledge Exchange

- Virtual seminar, from March 15 to April 9, 2021
- Promoting broader application of Integrated Geospatial Information Framework
- Providing an overview of Digital Twin projects



UN-GGIM-AP

Regional Committee of United Nations  
Global Geospatial Information Management  
for Asia and the Pacific

[un-ggim-ap.org](http://un-ggim-ap.org)

# Action Plan:

## I . Leveraging New Technologies for Land Management

- Working with local governments as well as global bodies including the World Bank and FIG
- Various technological advances including Artificial Intelligence(AI), digital sensing and the Digital Twin that can be applied in the land management

### Concept of Digital Twin

Create a Virtual Digital World identical to the Real World to simulate and forecast various situations



Spatial Data  
(3D Model)



Admin Data



Real Time  
Data  
(IoT, CCTV)

### Virtual Jeonju

Target Area : Part of Jeonju

#### Building Model (LOD 1~4)



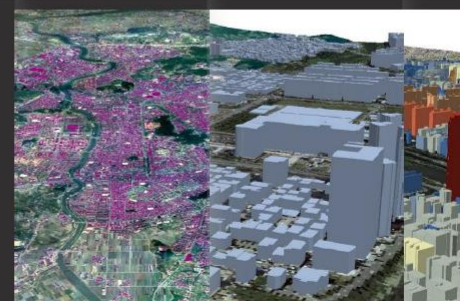
■ Indoor and Outdoor of Buildings  
based on LOD standards

#### Facility Model



■ 3D Modelling of Roads  
Underground and Traffic

LOD  
Level Of Detail



LOD 0

LOD 1



# Action Plan:

## II . Targeting Geospatial Solution for Pandemic Recovery

- Stepping up global efforts against COVID-19
- Utilizing spatial information
- Developing Digital Twin application as preventive measures against infectious diseases

### Application (COVID-19 Preventive Measures)

Facial Recognition



Body Temperature Recognition



Path Tracing



Air Control



Visualization per Floor and Space



Entry Control Service (LX Head Quarters 1<sup>st</sup> Floor)



# Action Plan:

## III. Bridging Geospatial Divide: Innovative Capacity Building Tools

- Introducing new ways for capacity building with global partners
- Establishing innovative geospatial information training centers



WORLD BANK GROUP

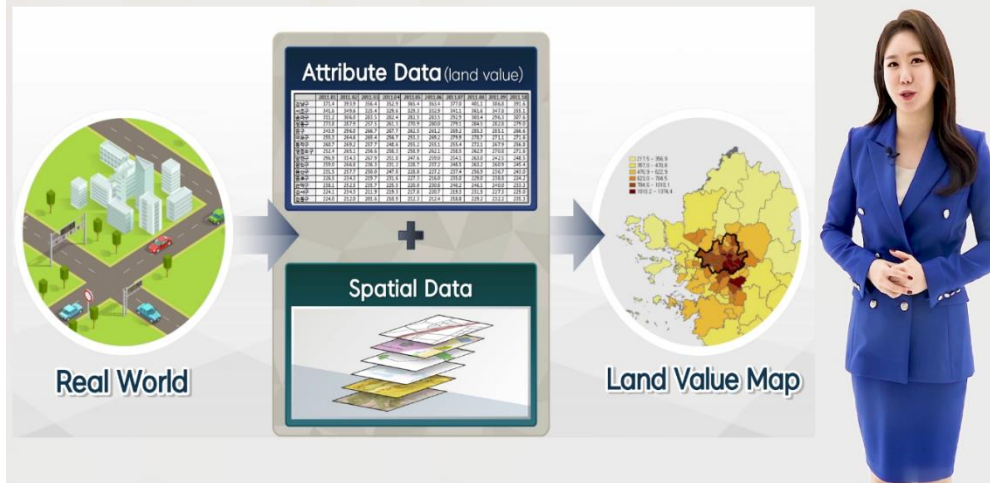


the Korea  
Green Growth  
Trust Fund

### Land Records and Geo-Spatial Information Systems linked to Green Growth (LRGIGG) Project

The On-line Capacity Building Program for Burkina Faso on Land Administration Experiences in Korea

Cases of Land Information System in Connection with E-Government



(Online Land Administration Capacity Building Program for Burkina Faso)



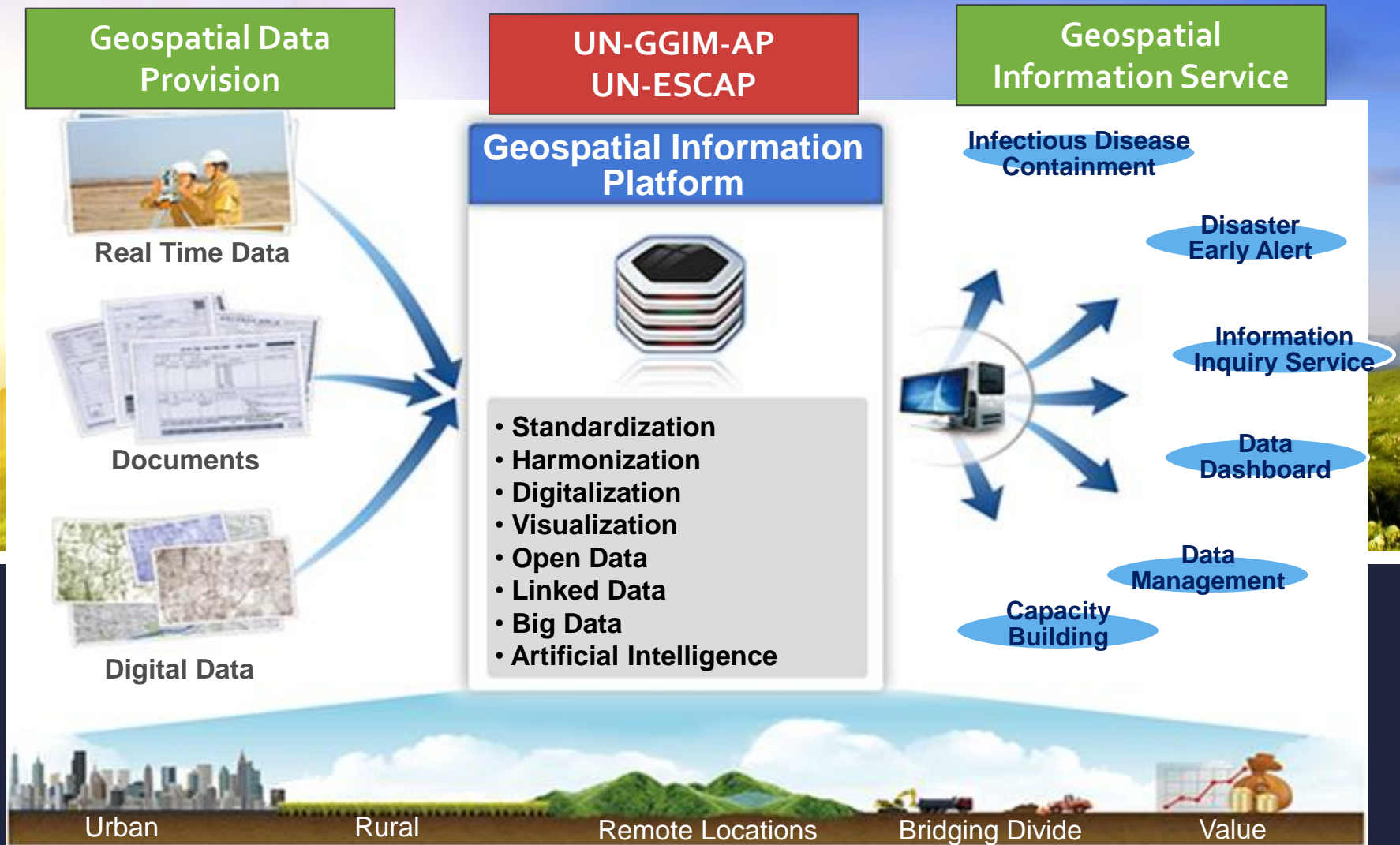
UN-GGIM-AP

Regional Committee of United Nations  
Global Geospatial Information Management  
for Asia and the Pacific

un-ggim-ap.org

# Visioning the Future :

## Need for a Harmonized Regional Geospatial Service Center







**Thank you very much**

**Working Group 2**  
**Cadastre and Land Management**



**UN-GGIM-AP**

Regional Committee of United Nations  
Global Geospatial Information Management  
for Asia and the Pacific

[un-ggim-ap.org](http://un-ggim-ap.org)