

THE 14TH UN-GGIM-AP

KINTEX, REPUBLIC OF KOREA
24-26 SEPTEMBER 2025



UN-GGIM-AP

REGIONAL COMMITTEE UNITED NATIONS
GLOBAL GEOSPATIAL INFORMATION
MANAGEMENT FOR ASIA AND THE PACIFIC



Ministry of Land, Infrastructure and Transport
**National Geographic
Information Institute**

❖ 1ST UN-GGIM Meeting

- 26 October 2011, Seoul, Republic of Korea



UN-GGIM-AP

REGIONAL COMMITTEE UNITED NATIONS
GLOBAL GEOSPATIAL INFORMATION
MANAGEMENT FOR ASIA AND THE PACIFIC



Ministry of Land, Infrastructure and Transport
**National Geographic
Information Institute**

❖ 4TH UN-GGIM-AP Plenary Meeting

▪ 9 October 2015, Jeju Island, Republic of Korea



UN-GGIM-AP

REGIONAL COMMITTEE UNITED NATIONS
GLOBAL GEOSPATIAL INFORMATION
MANAGEMENT FOR ASIA AND THE PACIFIC



Ministry of Land, Infrastructure and Transport
**National Geographic
Information Institute**





विज्ञान एवं प्रौद्योगिकी विभाग
DEPARTMENT OF
SCIENCE & TECHNOLOGY



भारतीय सर्वेक्षण विभाग
Survey of India



DR. JITENDRA KUMAR SINGH

Member, UN-GGIM Asia-Pacific Regional Conference
2023-2024, New Delhi, India

UN-GGIM Asia-Pacific Regional Conference



SHRI NARENDRA MODI

Honble Prime Minister



UN-GGIM-AP



❖ OVERVIEW

▪ The 14th UN-GGIM-AP Plenary Meeting

✓ Schedule

- 25th(Thu)-26th(Fri), September 2025

✓ Venue

- Executive Boarding Meeting: KINTEX 2 RM #308
- Working Group Meeting: KINTEX 2 RM #305-307
- **Plenary Meeting: KINTEX 2 RM #301**

✓ Side Event

- 11th ESDI Conference: 23rd(Tue) September, SONO Calm Hotel
- 2025 K-GEO Festa: 24th(Wed) September, KINTEX 1
- Global Seminar: 24th(Wed) September, KINTEX 2 RM #301-302

✓ Side Event Organizer

- ESDI Conference: NGII
- K-GEO Festa: MOLIT
- Global Seminar: NGII

Time	9/24(WED) *KINTEX 1,2	9/25(THU) *KINTEX 2 3F	9/26(FRI) *KINTEX 2 3F
09:00-10:00	K-EGO Festa & Exhibition	EB Meeting	Plenary Meeting
10:00-12:00		WG Meeting	
12:00-13:00	Lunch	Lunch	Lunch
13:00-16:00	Global Seminar	Technical Tour	Plenary Meeting
16:00-17:30			



UN-GGIM-AP

REGIONAL COMMITTEE UNITED NATIONS
GLOBAL GEOSPATIAL INFORMATION
MANAGEMENT FOR ASIA AND THE PACIFIC



Ministry of Land, Infrastructure and Transport
National Geographic
Information Institute

▪ Schedule

✓ K-GEO Festa

- 24th(Wed) 10:00-12:00
- Opening ceremony & geospatial expo
- KINTEX 1

✓ Global Seminar

- 24th(Wed) 13:00-17:30
- Shaping the Future: Geo-Innovation & Geo-Solution
- KINTEX 2 RM #301-302

✓ Gala Dinner

- 24th(Wed) 18:00-20:00
- KINTEX 2 RM #303-304

✓ Executive Board Meeting

- 25th(Thu) 09:00-10:00
- KINTEX 2 RM #308

✓ Working Group Meeting

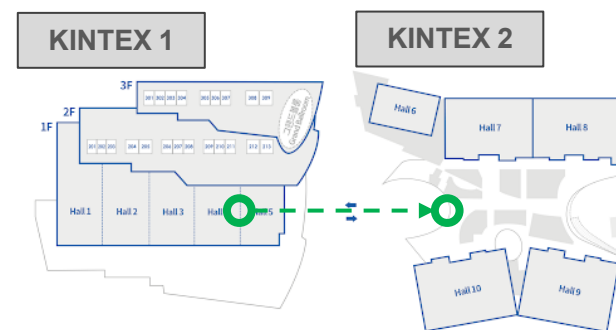
- 25th(Thu) 10:00-12:00
- KINTEX 2 RM #307 : Working Group 1
- KINTEX 2 RM #306(A) : Working Group 2
- KINTEX 2 RM #306(B) : Working Group 3
- KINTEX 2 RM #305 : Working Group 4

✓ Technical Tour

- 25th(Thu) 13:00-17:30
- Program : TBD

✓ Plenary Meeting

- 26th(Fri) 09:30-18:00
- 14th Meeting for UN-GGIM-AP
- KINTEX 2 RM #301



*An access route is available between KINTEX 1,2



❖ K-GEO FESTA

▪ Overview : Asia's Biggest Geospatial Information Technology Expo



✓ Venue & Schedule

- Venue : KINTEX 1
- 24(Wed)-26(Fri), September 2025
- Since 2008 : 17th Annual Event

✓ Program



BIG DATA/AI



BIM



UAV/UAM/Drones



Digital Twin



GNSS



LiDAR



Autonomous
Driving



IoT



Underground Space
Information



High Definition
Map



2,929
Exhibition booths



243,200
Participants



780
Decision makers
from 75 countries



278
Conference



UN-GGIM-AP

REGIONAL COMMITTEE UNITED NATIONS
GLOBAL GEOSPATIAL INFORMATION
MANAGEMENT FOR ASIA AND THE PACIFIC



Ministry of Land, Infrastructure and Transport
**National Geographic
Information Institute**

❖ GLOBAL SEMINAR

▪ Theme : Shaping the Future “Geo-Innovation & Geo-Solution”



✓ Venue & Schedule

- Venue : KINTEX 2, RM #301-302
- 24(Wed), September 2025 / 13:00-17:30

✓ Theme of Seminar

Shaping the Future: Geo-Innovation & Geo-Solution



Geospatial Data



Geo-Innovation



Geo-Solution

✓ Speakers



TBD



TBD



TBD



UN-GGIM-AP

REGIONAL COMMITTEE UNITED NATIONS
GLOBAL GEOSPATIAL INFORMATION
MANAGEMENT FOR ASIA AND THE PACIFIC



Ministry of Land, Infrastructure and Transport
National Geographic
Information Institute

❖ UN-GGIM-AP VENUE

▪ KINTEX 2 Layout



✓ Floor Guide

4F

- Meeting/Conference room

3F

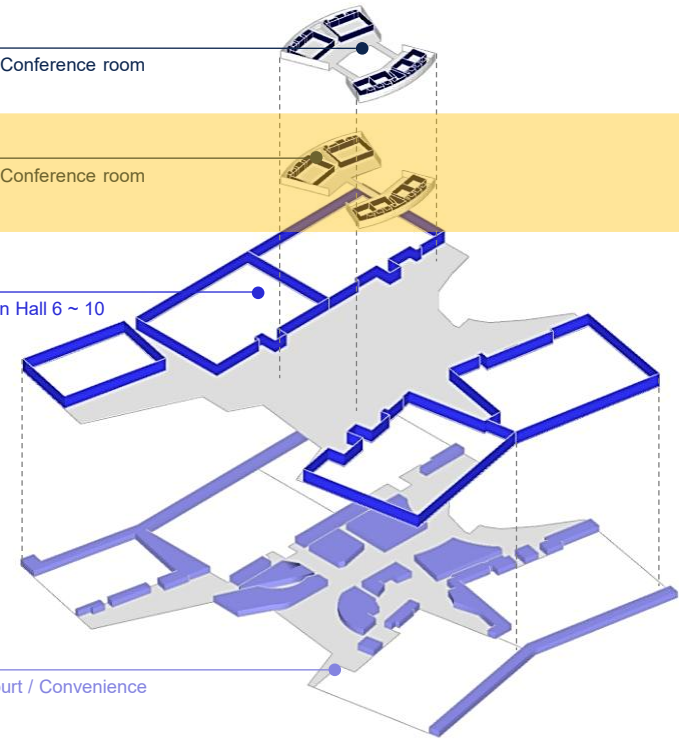
- Meeting/Conference room

2F

- Exhibition Hall 6 ~ 10

1F

- Food Court / Convenience



*Address : 217-59, Kintex-ro, Ilsanseo-gu, Goyang-si, Gyeonggi- do, Republic of Korea, 10390



UN-GGIM-AP

REGIONAL COMMITTEE UNITED NATIONS
GLOBAL GEOSPATIAL INFORMATION
MANAGEMENT FOR ASIA AND THE PACIFIC

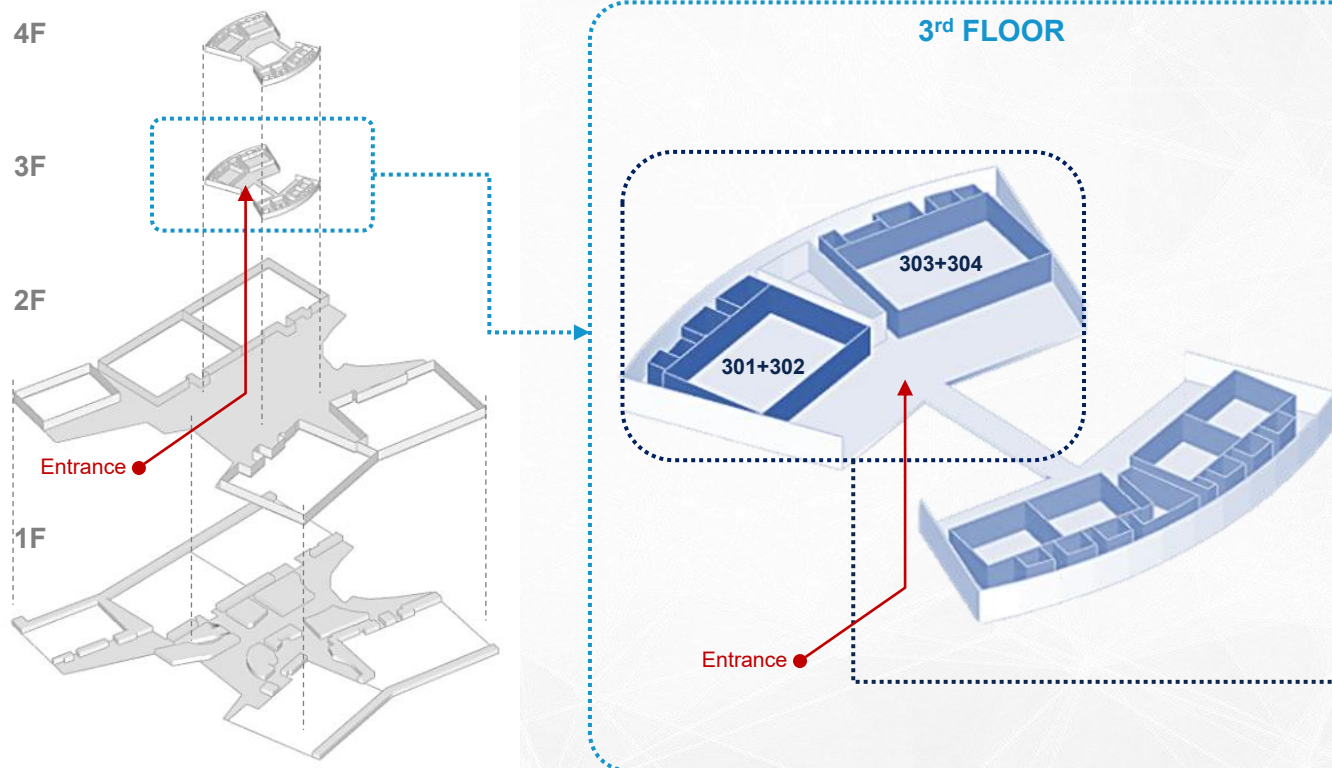


Ministry of Land, Infrastructure and Transport
National Geographic
Information Institute

❖ UN-GGIM-AP VENUE

▪ Detailed Layout for KINTEX 2, 3rd Floor

✓ Isometric View



✓ Room Information



Global Seminar & Plenary Meeting

Size	628m ²
Capacity	250 people(Banquet layout)
301+302	Global Seminar, Plenary Meeting
303+304	Gala Dinner, Lunch



UN-GGIM-AP

REGIONAL COMMITTEE UNITED NATIONS
GLOBAL GEOSPATIAL INFORMATION
MANAGEMENT FOR ASIA AND THE PACIFIC

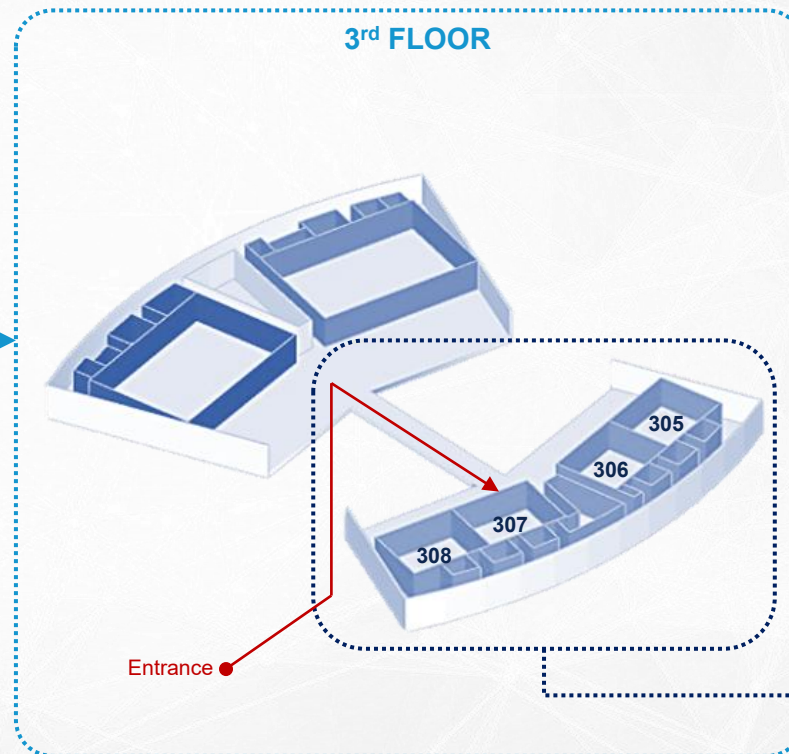
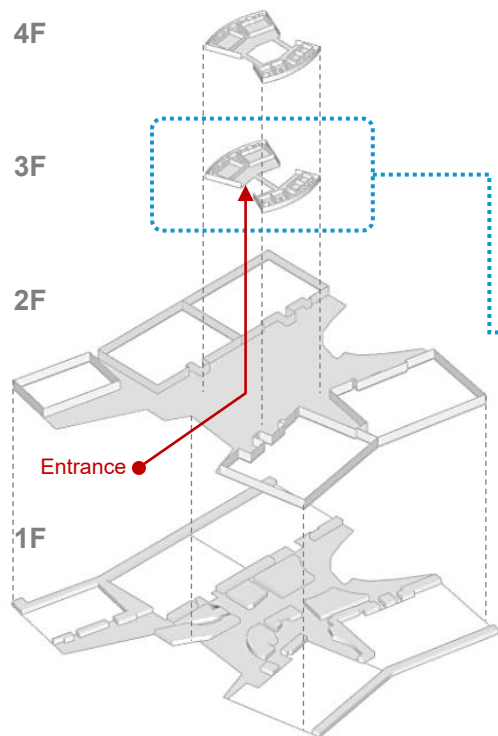


Ministry of Land, Infrastructure and Transport
National Geographic
Information Institute

❖ UN-GGIM-AP VENUE

▪ Detailed Layout for KINTEX 2, 3rd Floor

✓ Isometric View



✓ Room Information



EB & WG Meeting

Size	188m ²
Capacity	80 people(Lecture layout)
308	Executive Board Meeting
305~307	Working Group Meeting



UN-GGIM-AP

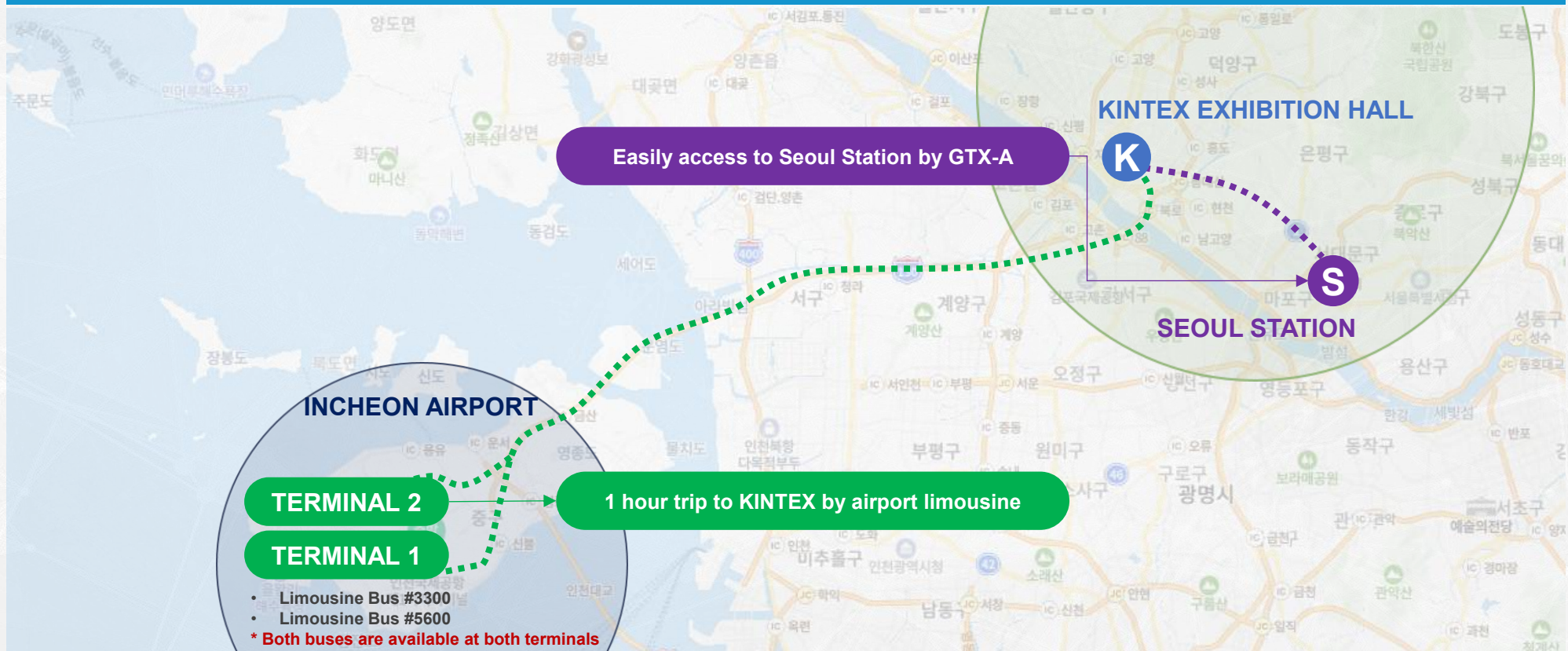
REGIONAL COMMITTEE UNITED NATIONS
GLOBAL GEOSPATIAL INFORMATION
MANAGEMENT FOR ASIA AND THE PACIFIC



Ministry of Land, Infrastructure and Transport
National Geographic
Information Institute

❖ TRANSPORTATION

▪ Incheon Airport to KINTEX



UN-GGIM-AP

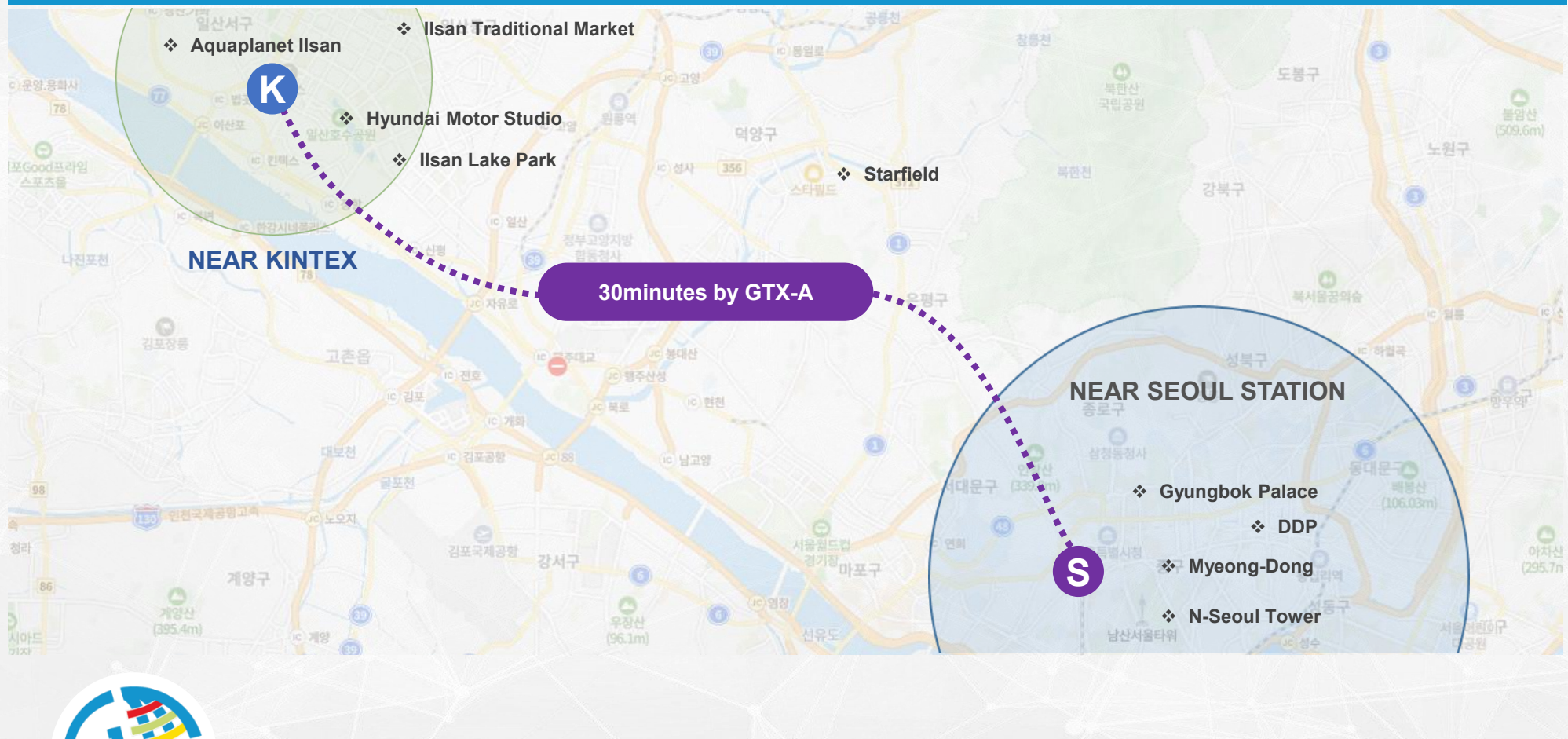
REGIONAL COMMITTEE UNITED NATIONS
GLOBAL GEOSPATIAL INFORMATION
MANAGEMENT FOR ASIA AND THE PACIFIC



Ministry of Land, Infrastructure and Transport
National Geographic
Information Institute

❖ TRANSPORTATION

▪ KINTEX from/to Seoul Station



UN-GGIM-AP

REGIONAL COMMITTEE UNITED NATIONS
GLOBAL GEOSPATIAL INFORMATION
MANAGEMENT FOR ASIA AND THE PACIFIC



Ministry of Land, Infrastructure and Transport
National Geographic
Information Institute

❖ ACCOMMODATION

■ Near KINTEX



SONO Calm Goyang ★★★★★

20, Taegeuk-ro, Ilsandong-gu, Goyangsi, Gyeonggi-do

(Distance) 1km, 10 minutes



Hotel Marina Bay Seoul Ara ★★★★★

210-50, Arayuk-ro, 152beon-gil, Gochon-eup, Gimpo-si, (Distance)

15km, 20 minutes by Shuttle Bus from KINTEX



KINTEX by K-tree ★★★

255-3, Kintex-ro, Ilsanseo-gu, Goyang-si, Gyeonggi-do

(Distance) 1km, 3 minutes



Ramada Encore by Wyndham ★★★

169, Arayuk-ro 152beon-gil, Gimpo-si, Gyeonggi-do

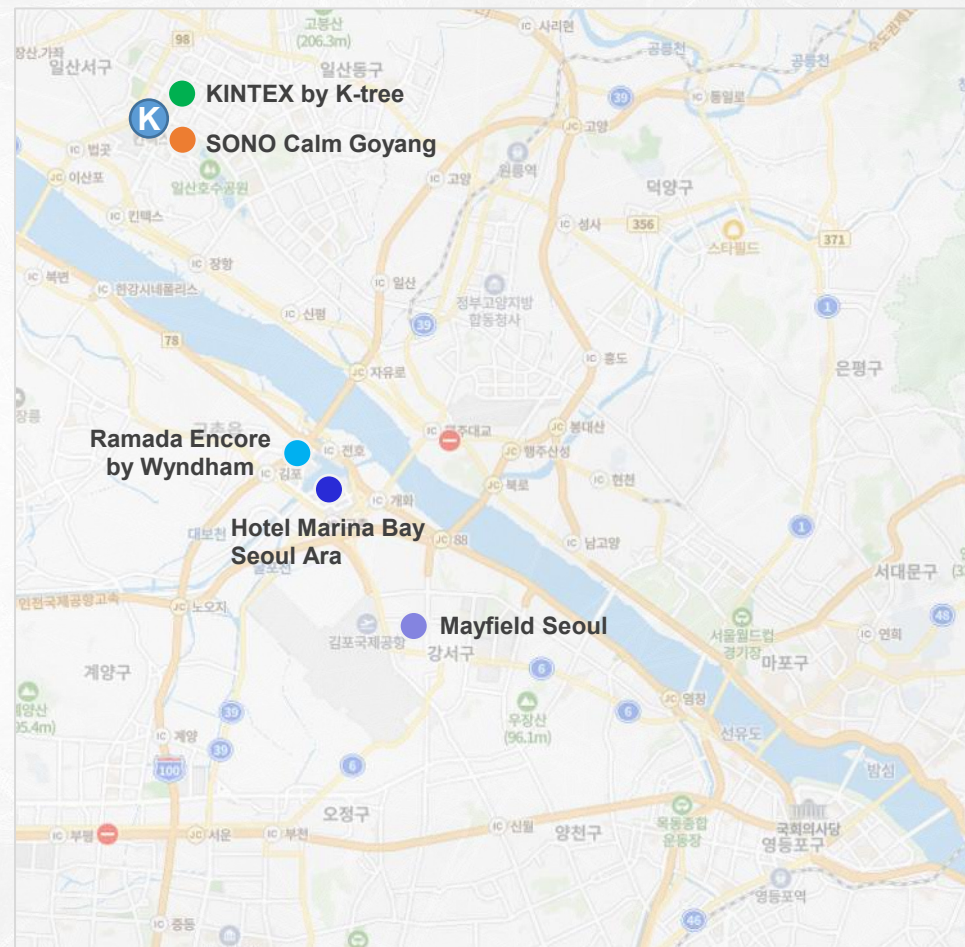
(Distance) 15km, 20minutes



Mayfield Seoul ★★★★★

94, Banghwa-daero, Gangseo-gu, Seoul

(Distance) 20km, 30 minutes



*Distance and time from KINTEX

Hotel Link : <https://www.kintex.com/web/ko/html/service/hotel.do>



UN-GGIM-AP

REGIONAL COMMITTEE UNITED NATIONS
GLOBAL GEOSPATIAL INFORMATION
MANAGEMENT FOR ASIA AND THE PACIFIC



Ministry of Land, Infrastructure and Transport
**National Geographic
Information Institute**

❖ ACCOMMODATION

▪ Near Seoul Station



Fraser Place Central Seoul & Namdaemun

★★★★

58, Sejong-daero, Jung-gu, Seoul, Republic of Korea

78, Tongil-ro, Jung-gu, Seoul, Republic of Korea

(Distance) 41 minutes by GTX & Bus



Four Points by Sheraton Josun Seoul Station

★★★★

36, Samil-daero 10-gil, Jung-gu, Seoul

(Distance) 25 minutes by GTX & on foot



Ramada Hotel and Suites Seoul Namdaemun

★★★★

27, Chilpae-ro, Jung-gu, Seoul

(Distance) 35 minutes by GTX & on foot

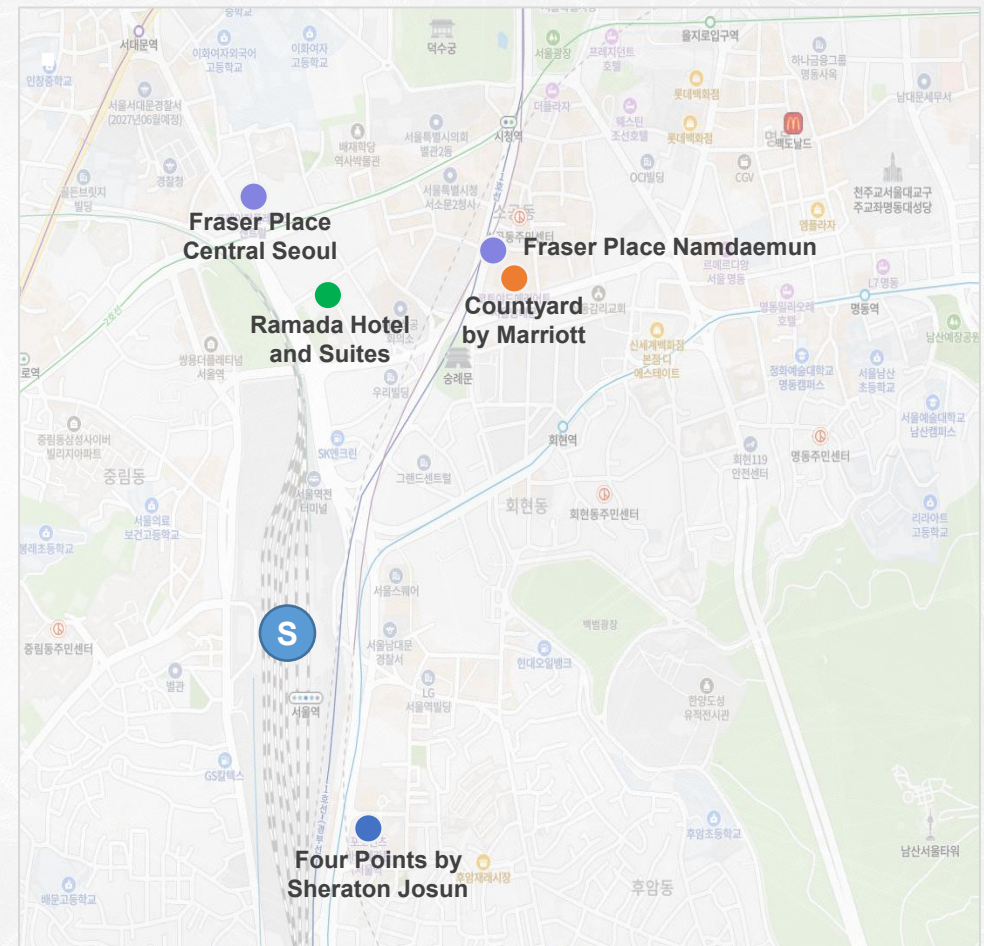


Courtyard by Marriott Seoul Namdaemun

★★★★★

9, Namdaemun-ro, Jung-gu, Seoul

(Distance) 46 minutes by GTX & Bus



*Distance and time from KINTEX

Hotel Link : <https://www.kintex.com/web/ko/html/service/hotel.do>



UN-GGIM-AP

REGIONAL COMMITTEE UNITED NATIONS
GLOBAL GEOSPATIAL INFORMATION
MANAGEMENT FOR ASIA AND THE PACIFIC



Ministry of Land, Infrastructure and Transport
National Geographic
Information Institute

❖ ADDITIONAL INFORMATION

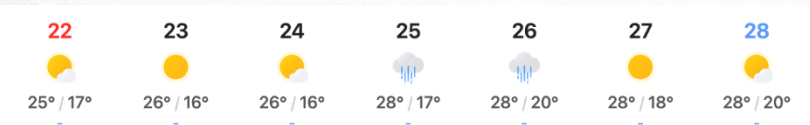
▪ Visa

Nationals of non-visa waiver countries must apply for visas(business visitor C-3-4) at the nearest Korea embassy or consulate prior to entering the ROK. This visa will be issued with single or multiple entries depending on the nationality. And the duration of stay for the single entry is 90 days. The head of Korean diplomatic missions abroad may request for additional documents depending on the condition of the country of residence/jurisdiction if it is deemed necessary for visa evaluation.

To ensure the smooth processing of visa applications, official invitations will be sent by the end of June. Additional or required information will be gathered via email.

▪ Convenience

Weather



Voltage

In Republic of Korea, power plugs and sockets of type C and type F are used. The standard voltage is 220 V at a frequency of 60 Hz.

Currency

The Korean currency unit is the WON(KRW). Except for some small shops, such as street vendors, credit cards (Visa, MasterCard, Amex, Union Pay, and other international credit cards) are widely accepted.

Time Zone

Republic of Korea is in the Korea Standard Time (UTC+9). This means it is 9 hours ahead of the Coordinated Universal Time (UTC.)



UN-GGIM-AP

REGIONAL COMMITTEE UNITED NATIONS
GLOBAL GEOSPATIAL INFORMATION
MANAGEMENT FOR ASIA AND THE PACIFIC



Ministry of Land, Infrastructure and Transport
National Geographic
Information Institute

❖ REGISTRATION

▪ Invitation & Early Registration

✓ Notification

*Pre-registration

The UN-GGIM-AP Secretariat will send out formal invitations to all member countries to participate in the 14th Plenary of UN-GGIM-AP from 24-26, September, 2025 at Gyeonggi-do in Republic of Korea. The invitation will include the tentative program schedule and event registration line details. Invitations will be sent by the end of June.

Interested participants are to submit their requests for the participation by registering at [\(link\)](#). Kindly ensure timely registration till the end of July, to confirm your participation and issuance of visa facilitation letter by host country.

***Official registration homepages are scheduled to be established by the mid of July.**

*On-site registration

On-site registration will also be made at the venue from 08:30 on 24 September 2025 onwards.



UN-GGIM-AP

REGIONAL COMMITTEE UNITED NATIONS
GLOBAL GEOSPATIAL INFORMATION
MANAGEMENT FOR ASIA AND THE PACIFIC



Ministry of Land, Infrastructure and Transport
**National Geographic
Information Institute**

Q / A



UN-GGIM-AP

REGIONAL COMMITTEE UNITED NATIONS
GLOBAL GEOSPATIAL MANAGEMENT
FOR ASIA & THE PACIFIC



Ministry of Land, Infrastructure and Transport
**National Geographic
Information Institute**